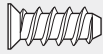


# Accessories

## Screws

### Deep thread system screws



Use to attach cabinet profiles

Pilot bore  $\varnothing 5$  (3/16") hole

13(1/2"), #2 POZI	661.1300HG
14.5(9/16"), #2 POZI	661.1450HG

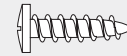
### Deep thread wood screws



**707N or 7034N** to attach cabinet profiles  
**606N or 606P** to attach narrow locking device

#6x5/8", #2 Phillips	606N
#6x5/8", #2 POZI	606P
#7x5/8", #2 Phillips	707N
#7x3/4", #2 Phillips	7034N

### Truss head wood screw

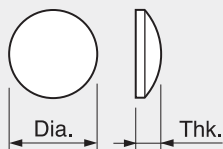


Use to attach locking devices

Pilot bore  $\varnothing 2.5$  (3/32") hole

#6x1/2", truss head	612TH
---------------------	-------

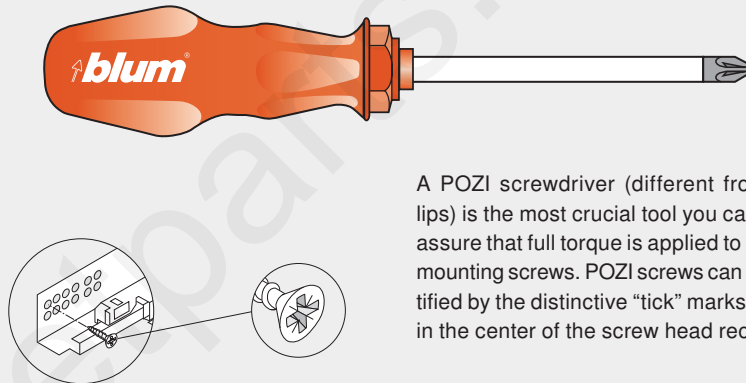
## Bumpers



Cushions drawer closing  
 Self-adhesive back, clear

6(1/4") dia. x 1.5(1/16")	FX4041
10(3/8") dia. x 3(1/8")	SJ5312

## POZI DRIVER and bits



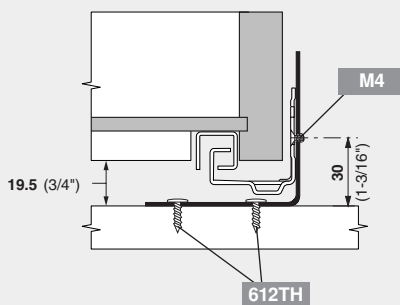
A POZI screwdriver (different from Phillips) is the most crucial tool you can use to assure that full torque is applied to all Blum mounting screws. POZI screws can be identified by the distinctive "tick" marks located in the center of the screw head recess.

#2x1" POZI bit insert	POZI BIT #2x1
#2 POZI DRIVER	POZI DRIVER
1/4" bit holder	BIT HOLDER

## Universal bracket kit

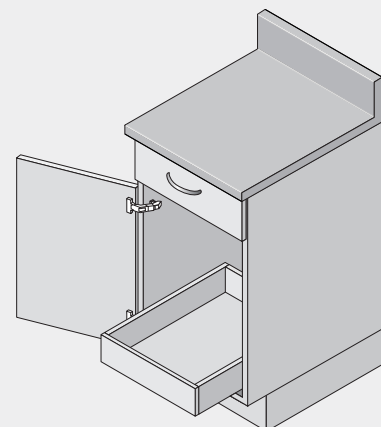
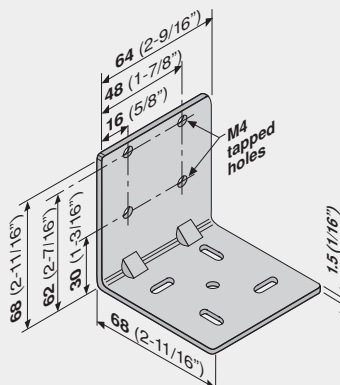
### For bottom mount applications

- Includes (4) brackets
- Includes (8) M4 screws



Universal bracket kit	295.4000
-----------------------	----------

### Dimensions



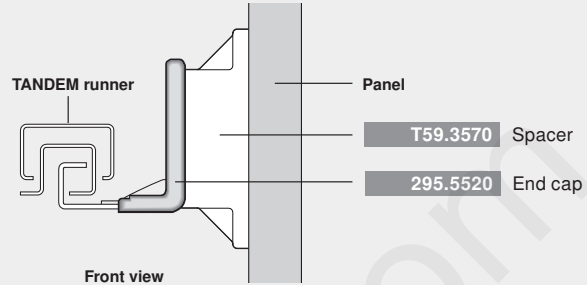
## TANDEM end cap



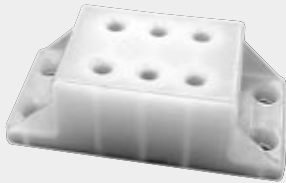
- To cover the front edge of TANDEM cabinet profiles when used in an interior roll-out application
- Can be used with all 562H and 568H and 568. series runners

Right end cap	295.5520
Left end cap	295.5521

### Application



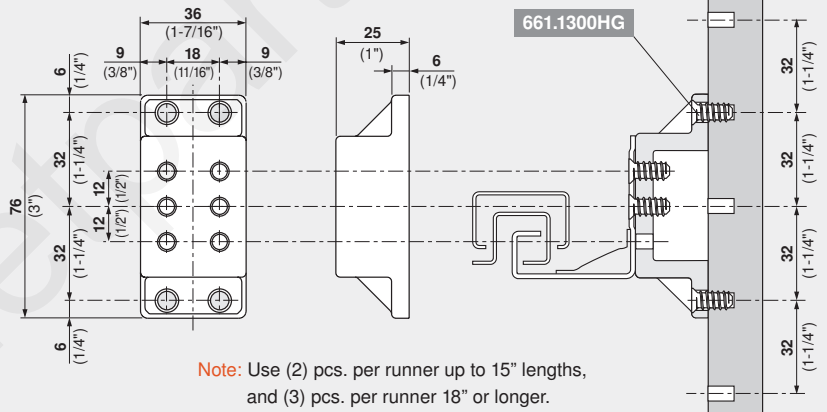
## Side spacer



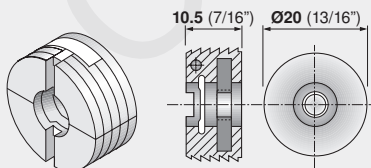
For spacing out TANDEM runners from the cabinet side for clearance on interior roll-outs

Spacer	T59.3570
--------	----------

### Application



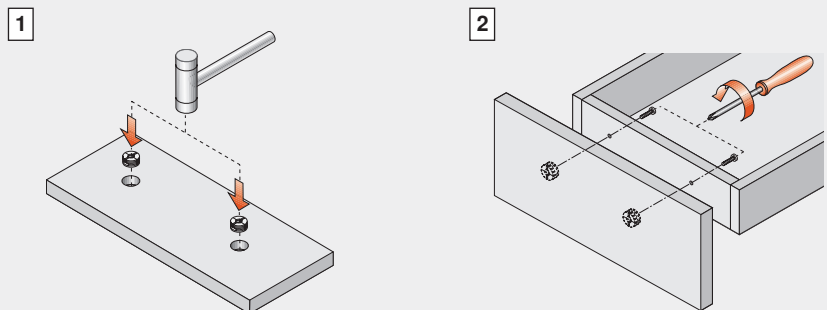
## Drawer front adjuster



Nylon housing with pre-mounted 8-32 steel nut. For 4-sided drawers. Adjusts height and side-to-side by 5 (3/16").

Drawer front adjuster	295.1000
-----------------------	----------

### Using the drawer front adjuster

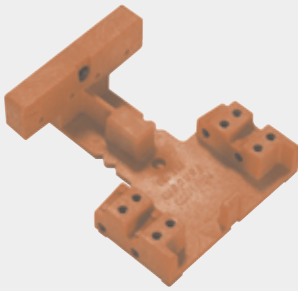


Insert drawer front adjusters manually or with a MINIPRESS insertion ram (MZM.0095)

Install and adjust drawer front

# Assembly aids

## TANDEM template



- Essential tool for drawers using TANDEM runners
- To bore the  $\varnothing 6\text{mm}$  holes for rear hooks
- To pilot bore  $\varnothing 2.5\text{mm}$  hole for TANDEM locking devices at  $12^\circ$  angle

TANDEM template **T65.1000.02**

**Accessories** (order separately)

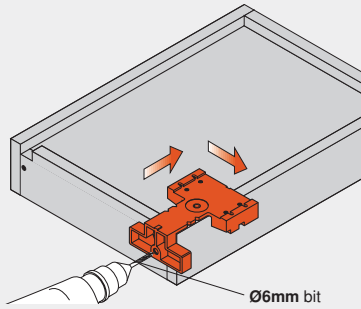
$\varnothing 2.5\text{mm}$  drill bit **DB-2.5mm**

$\varnothing 6\text{mm}$  drill bit **DB-6mm**

Tool set **T65.9000**

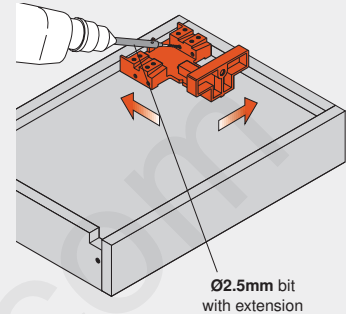
### Using the TANDEM template

1

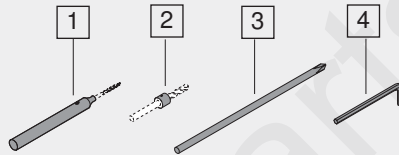


Bore rear fixing holes.

2



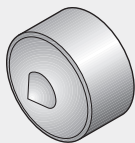
Bore pilot holes for locking device screws.



#### Tool set

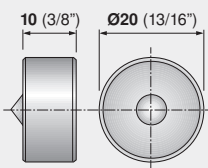
- |   |  |
|---|--|
| 1 | $\varnothing 2.5\text{mm}$ drill bit extension |
| 2 | $\varnothing 6\text{mm}$ stop collar           |
| 3 | Screwdriver tip                                |
| 4 | Allen key                                      |

## Drawer front adjuster marking gauge



For marking center holes for knock-in drawer front adjusters.

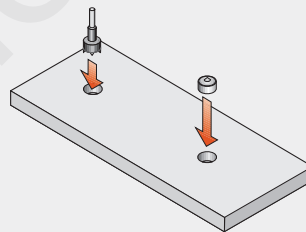
For wooden 4-sided drawers.



Marking gauge **65.2950.10**

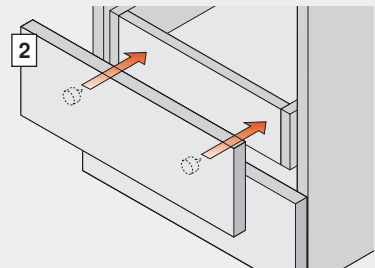
### Using the marking gauge

1



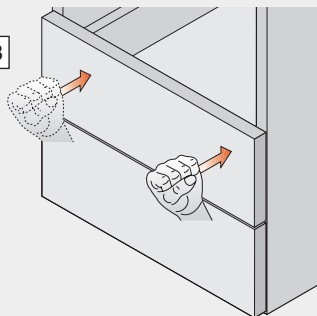
Bore for front adjusters. Insert marking gauges into drawer front.

2



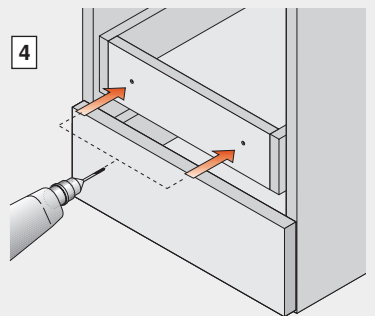
Align the drawer front to make marks in the drawer box.

3

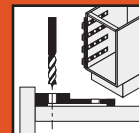


Mark fixing positions with a light tap onto the drawer front.

4



Drill  $\varnothing 5$  (3/16") holes through the drawer box.



## Cabinet profile template



- For determining cabinet profile positions using the integrated ruler
- Template can be used with assembled or unassembled cabinets
- Ensures precise and level location of cabinet profiles
- Suitable for all Blum drawer runners (except SOLO)

### Cabinet profile template parts

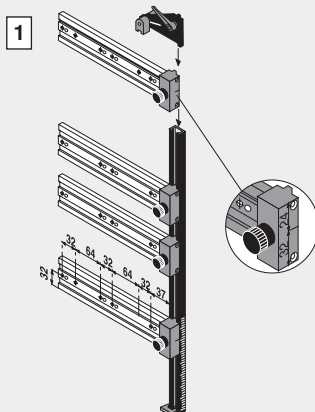
- Metric calibrated bar, 1 meter long
- Adjustable templates (4 pcs.)
- Clamping lever
- Extension for Ø2.5mm drill bit

Cabinet profile template **T65.5000.01**

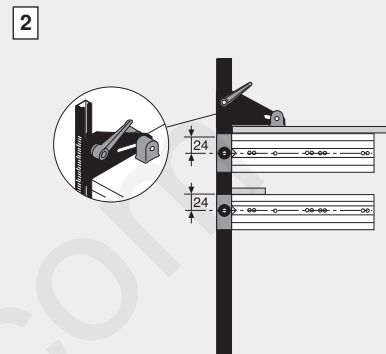
**Accessories** (order separately)

Ø2.5mm drill bit **DB-2.5mm**

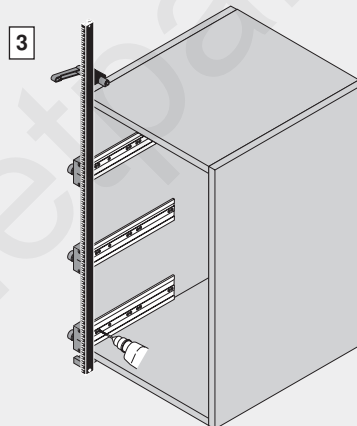
### Using the TANDEM template



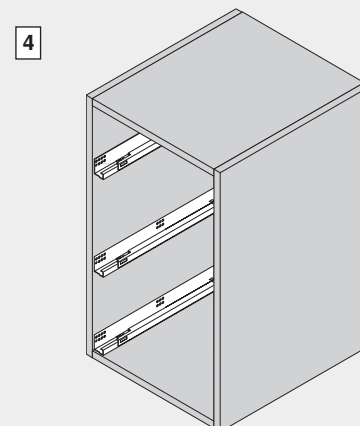
Determine runner locations and set templates on the bar by using the integrated scale.



Clamp assembly to the cabinet side.



Bore Ø2.5mm pilot holes through templates for front and middle mounting positions.



Fasten runners to cabinet sides with required screws into pre-bored holes. Add extra screws as required for strength.