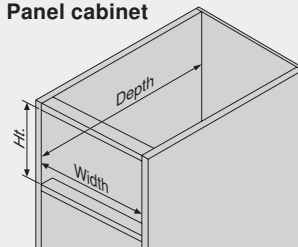




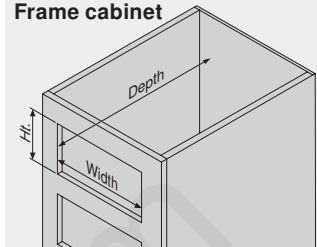
Step 1: Measure cabinet opening

These measurements are needed to determine drawer box size.

Panel cabinet



Frame cabinet



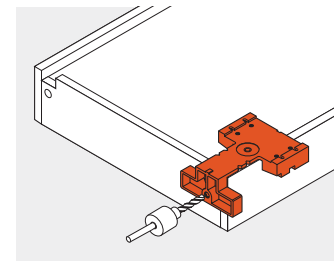
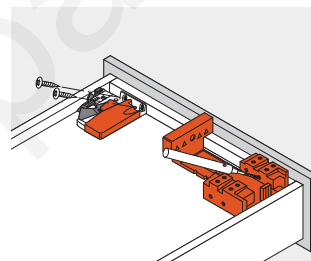
Step 2: Select TANDEM runners

Based on the application, choose the TANDEM concealed runner that fits the desired extension, drawer side thickness, weight capacity and cabinet depth. Then go to the corresponding catalog page for more specific information.

Drawer length	Partial extension		Full extension		Full extension with BLUMOTION		Heavy duty full extension with BLUMOTION	
	Max. drawer thickness 5/8"	3/4"	Max. drawer thickness 5/8"	3/4"	Max. drawer thickness 5/8"	3/4"	Max. drawer thickness 5/8"	3/4"
9"								
12"	TANDEM 552H	TANDEM 552F						
15"			TANDEM plus 562H	TANDEM plus 562F	TANDEM plus BLUMOTION 562H	TANDEM plus BLUMOTION 562F		
18"	page 15	page 17	page 19	page 21	page 19	page 21		
21"							TANDEM plus BLUMOTION 568H and 568	TANDEM plus BLUMOTION 568F and 568A
24"							page 23	page 25
27"								
30"								
Capacity dynamic static	75/100 lb.	75/100 lb.	75/100 lb.	75/100 lb.	75/100 lb.	75/100 lb.	110/125 lb.	110/125 lb.

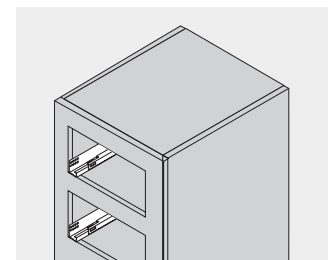
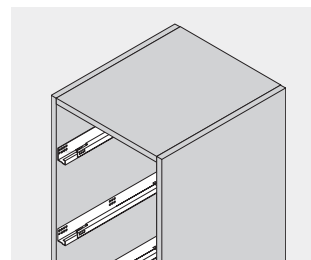
Step 3: Build drawer boxes

Build drawers according to the specifications given for the TANDEM runners you chose and the measurements determined in Step 1. Install appropriate locking devices and bore holes to accept rear hooks.



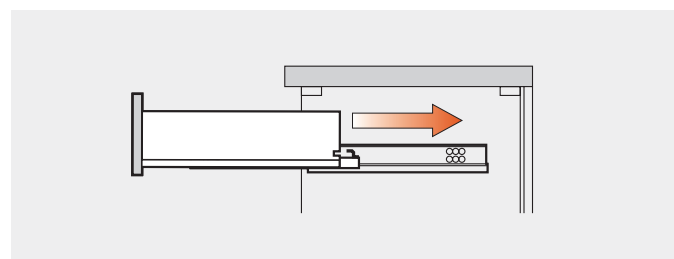
Step 4: Attach runners to cabinet

Using the mounting information given for the TANDEM runners you chose, mount the TANDEM runners in the cabinet.



Step 5: Insert drawers

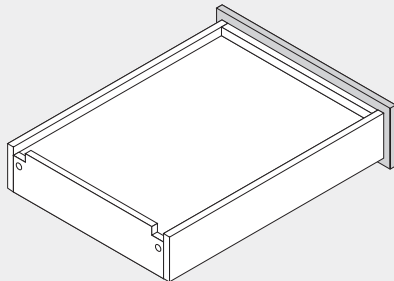
Place the drawer on the runners and close. The locking devices automatically engage with the runners. Make height and tilt adjustments if necessary.



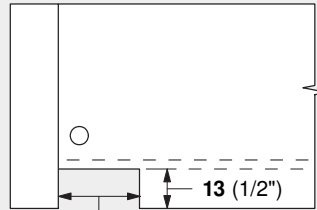


Rear notching

Dimensions



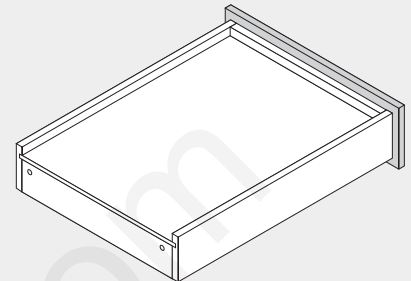
Drawers must be notched in the back to accommodate TANDEM runners.



21 (13/16") for 552 series
33 (1-5/16") for 562/568 series

The notches must be flush with the drawer bottom.

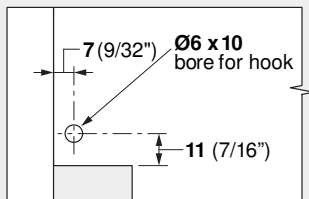
Option - no notching



Make the back panel shorter and extend the drawer bottom to the back of the drawer.

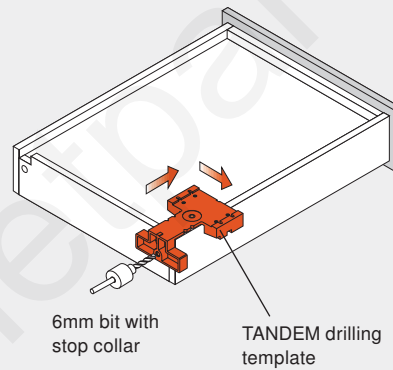
Rear boring

Dimensions



Drawers must have 6mm holes drilled in the back panel to accept the hooks in the back of TANDEM runners.

Boring

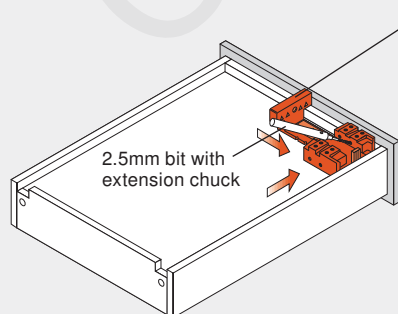


1. Place the template over the drawer side
2. Position the template so that the center rib rests against the inside face of the drawer side
3. Set stop collar on 6mm bit so that it will drill 10 (3/8") deep
4. Hold template firmly and drill hole
5. Repeat on other side

Note: Using the T65.1000.02 template is highly recommended

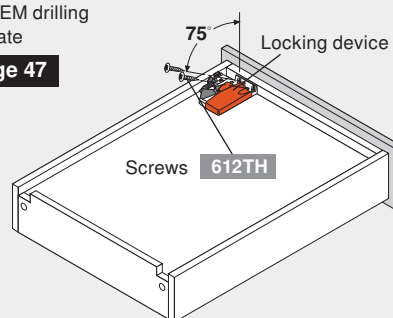
Locking devices

Attachment



Mounting screws must go in at a precise angle to ensure proper function of the locking devices.

TANDEM drilling template
page 47

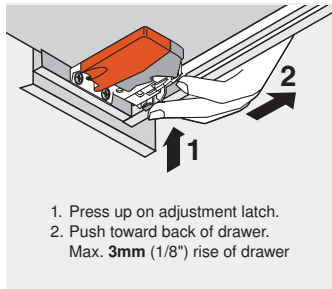


1. Position the 2.5mm drill bit into the extension chuck so that it extends 10 (3/8") out of the template
2. Place template into the front corner of the drawer
3. Drill two holes and repeat on the other side
4. Attach locking devices with #6 X 1/2" truss head screws (612TH)

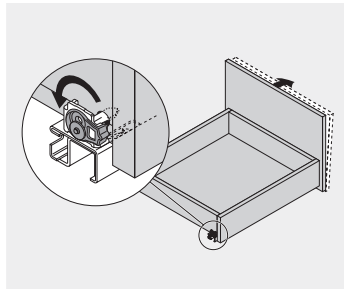
Note: Using the T65.1000.02 template is highly recommended



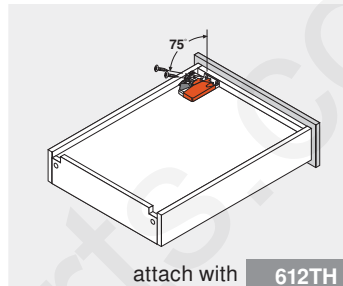
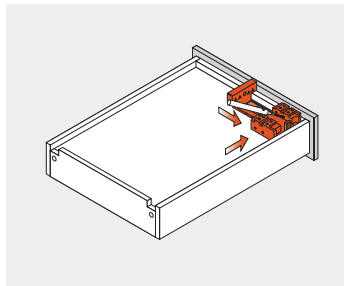
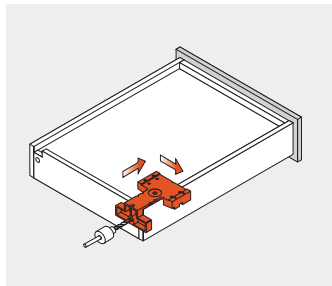
Height adjustment



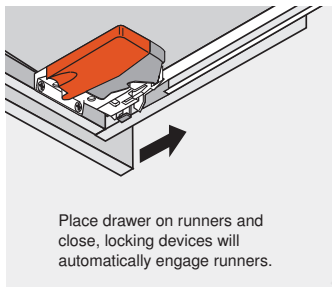
Tilt adjustment



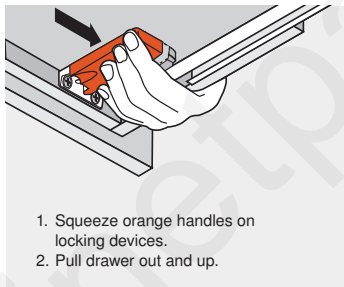
Drawer preparation



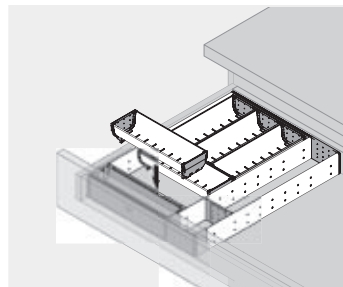
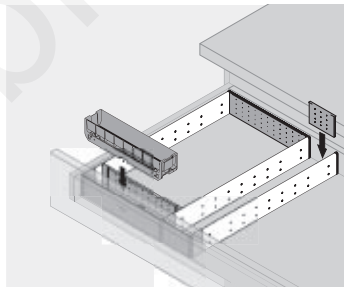
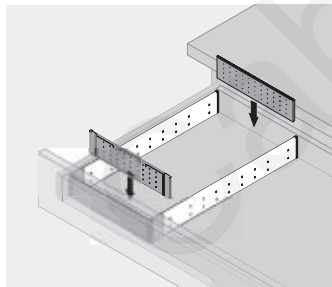
Drawer box insertion



Drawer box removal



ORGA-LINE tray set assembly



ORGA-LINE deep drawer assembly

