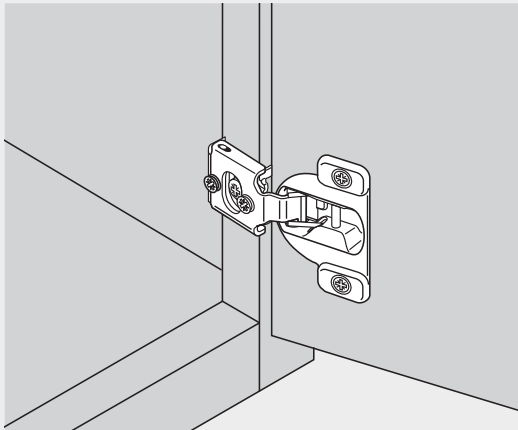
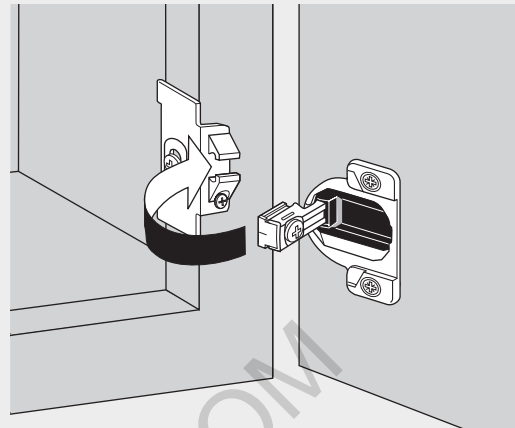


# Using this section - COMPACT hinges

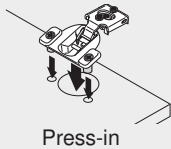
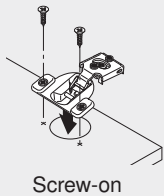
## COMPACT 38/39 - one piece hinges



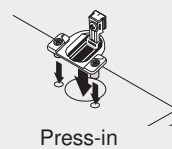
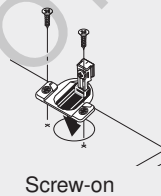
## COMPACT 33 - two piece hinges



### Step 1: Choose the insertion type



### Step 1: Choose the insertion type

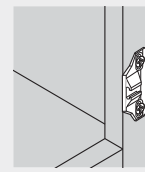
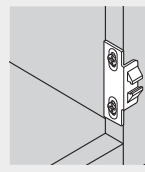


### Step 2: Choose the overlay

	7/16"	Self close 1/2"
Screw-on	38N355C.07	38N355C.08
Press-in	38N358C.07	38N358C.08

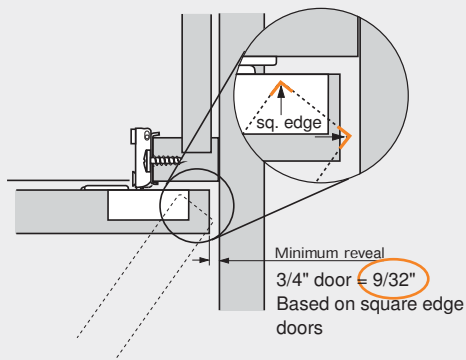
Ram needed for use with MINIPRESS

### Step 2: Choose the overlay by the mounting plate



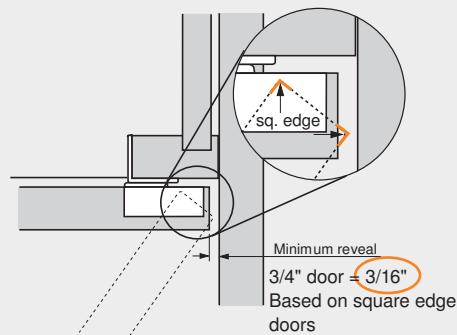
### Step 3: Check minimum reveal

All minimum reveal tables are based on square edge doors. A radius or profile door will reduce the minimum reveal. Trial recommended.



### Step 3: Check minimum reveal

All minimum reveal tables are based on square edge doors. A radius or profile door will reduce the minimum reveal. Trial recommended.



COMPACT



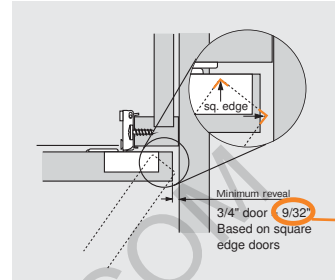
## COMPACT 38N hinges



### Features

- Steel, nickel plated
- 105° opening angle
- One piece assembly
- Wrap around or edge mount
- 7/16" cup depth
- ±1/8" height adjustment
- ±1/16" side adjustment
- +3/32" -1/32" cam depth adjustment

### Minimum reveal



General specs & installation  
Cover caps

page 65  
page 72

Step 1

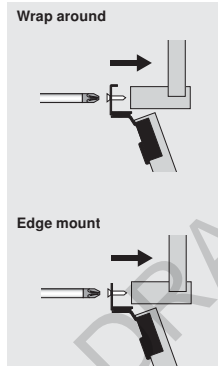
Step 3

### Overlay application

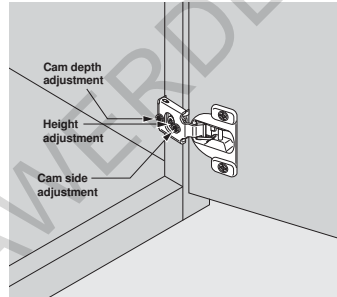
Wrap around	3/8"	7/16"	1/2"	5/8"	3/4"
Screw-on	38N355C.06	38N355C.07	38N355C.08	38N355C.10	38N355C.12
Press-in	38N358C.06	38N358C.07	38N358C.08	38N358C.10	38N358C.12
Edge mount			1/2"		
Screw-on			38N355CE08		
Press-in			38N358CE08		

Step 2

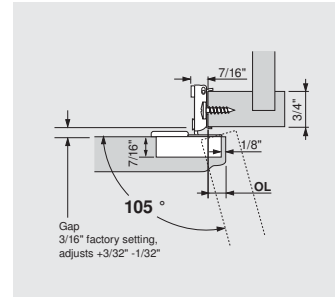
### Attachment



### Adjustment



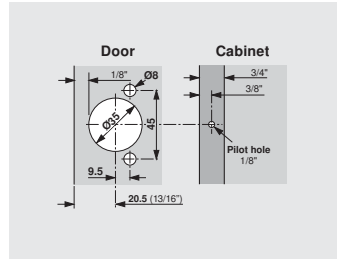
### Dimensions



### Wood screws

- #10x3/4" pilot bore **1034N**
- #8 x 3/4" self-drilling **834TH**

### Boring pattern



### Door protrusion

OL	P
3/8"	1/4"
7/16"	3/16"
1/2"	1/8"
5/8"	0
3/4"	0

OL = Door overlay  
P = Door Protrusion

Dimensions in inches. Metric where shown.  
Subject to technical modifications without notice. © 2007



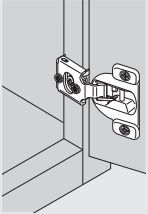


# COMPACT general specifications

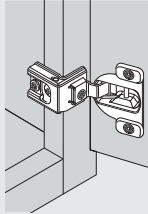
## Mounting plate attachment

One piece assembly

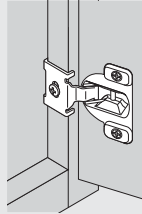
COMPACT 38N  
wrap or edge



COMPACT 38C/39C  
wrap around

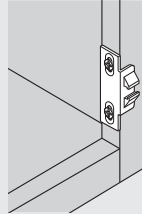


COMPACT 38.  
wrap or edge

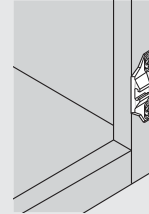


Two piece assembly

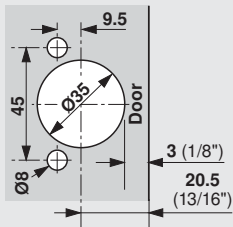
COMPACT 33  
edge mount



COMPACT 33  
face mount

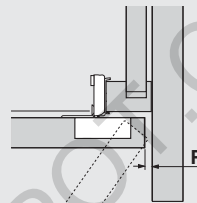


## Hinge cup centerpoint



Cup centerpoint and MINIPRESS / MINIDRILL set-back position is **20.5 (13/16")** for COMPACT hinges.

## Minimum reveal

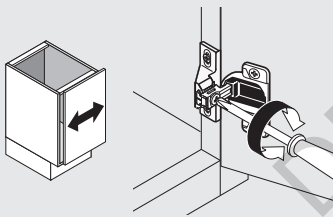


A minimum reveal per door is required to keep the door from binding and varies depending on door thickness (see Minimum reveal table for each hinge).

## Three-way independent adjustment

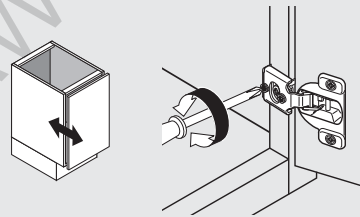
### Side adjustment

Side adjustment possible on all COMPACT hinges except 38. series. COMPACT 38C/39C have cam side adjustment.



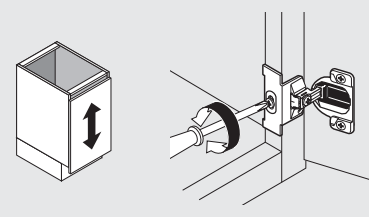
### Depth adjustment

COMPACT 38N, 38C and 39C have cam depth adjustment.



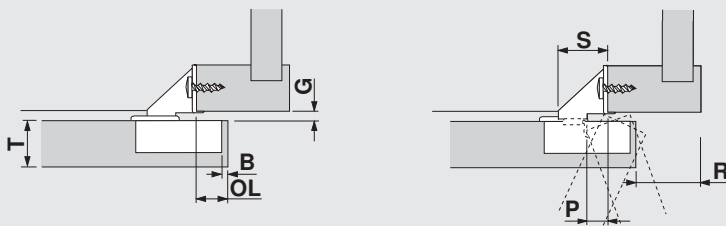
### Height adjustment

All COMPACT hinges are independently height adjustable.



One piece mounting plate

## Hinge dimension abbreviations

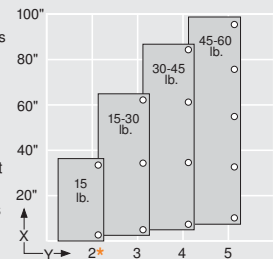


- B** = Boring distance
- OL** = Door overlay
- G** = Door gap
- P** = Door protrusion (at max. opening)
- R** = Reveal
- S** = Hinge arm protrusion
- T** = Door thickness

## Hinges per door

**X** = Door height  
**Y** = Number of hinges

This chart can serve as a guide for determining the number of hinges per door. Note that door weight can also determine the number of hinges required.



\* The distance between the top and bottom hinges must be greater than the width of the door.