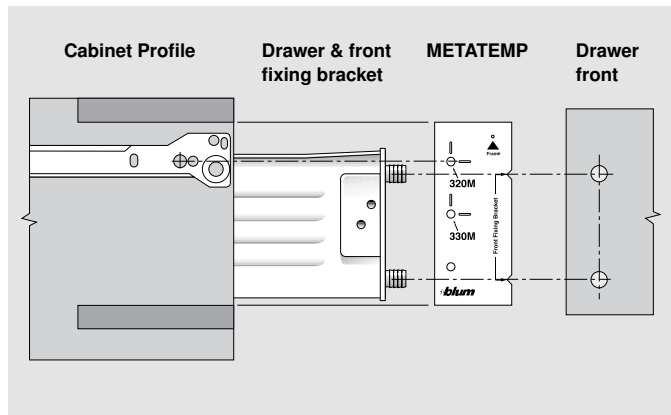


## METABOX layout templates



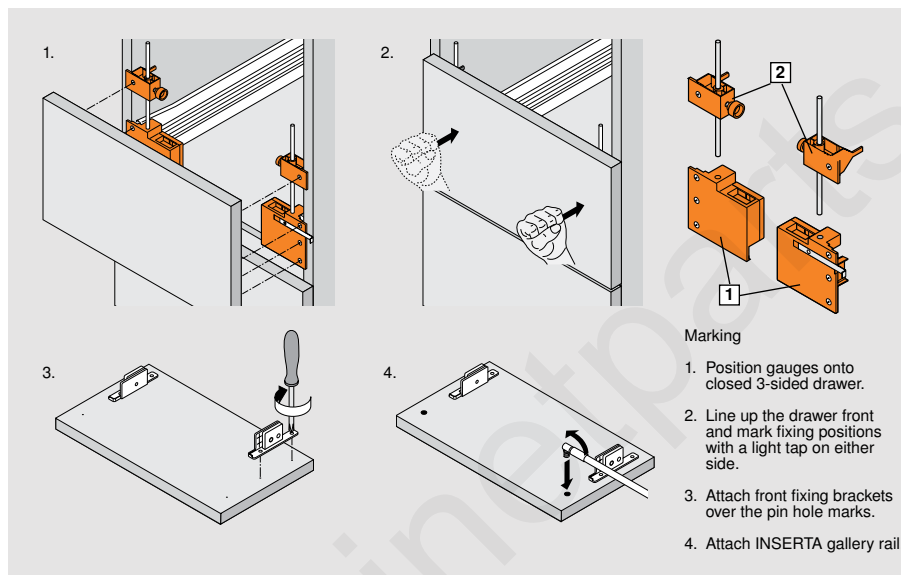
**METATEMP layout templates provide a simple means for locating the cabinet profile and front fixing bracket positions.**

Included in each kit are five templates for 320N, 320/330M, 320K, 320/330H, and a gallery locator for all series.

Each template's height is the minimum cabinet opening size required. To use, place on a side panel and mark the cabinet profile location. Transfer the front fixing bracket location to the drawer front. For linebored cabinets, insert a shelf pin through the template into the system hole.

**METATEMP** Layout template kit

## Drawer front marking gauges



**For marking all front fixing bracket positions including drawers with galleries.**

### 1 Standard marking gauge set

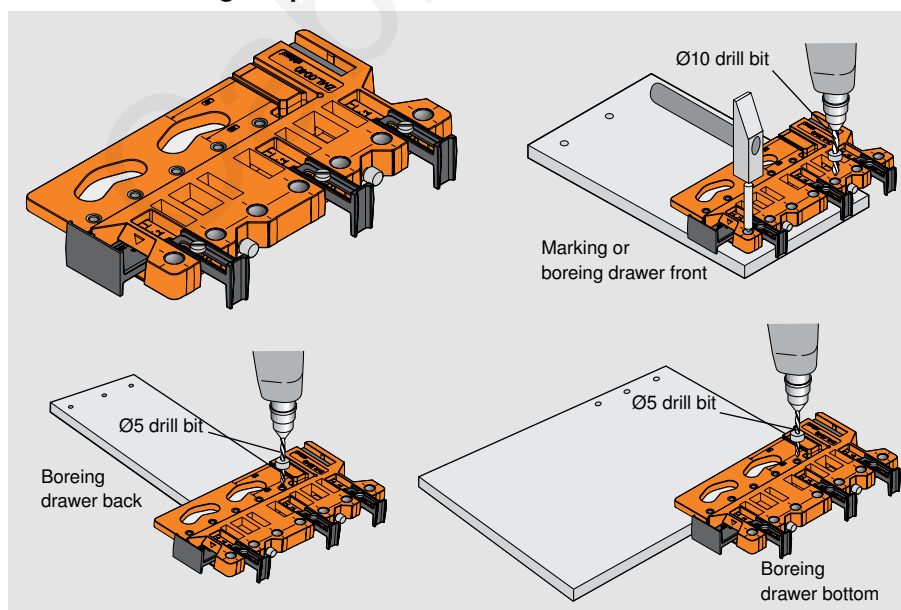
**ZML.1500** For METABOX 320M, K, and H

**ZML.1510** For METABOX 320N

### 2 Gallery marking gauge set

**ZML.8000.01** (2) rods with adjustable marking gauges

## METABOX drilling template



**For manually boring all the holes necessary to build a METABOX drawer.**

Drilling template can be used for drawer front, back and bottom. Locates all fixing points.

**Ø5 (3/16") & Ø10 (3/8") stop collars included.**  
**Ø10 (3/8") center punch included.**

**ZML.0040** Drilling template set

**DB-5mm** Ø5 (3/16") drill bit

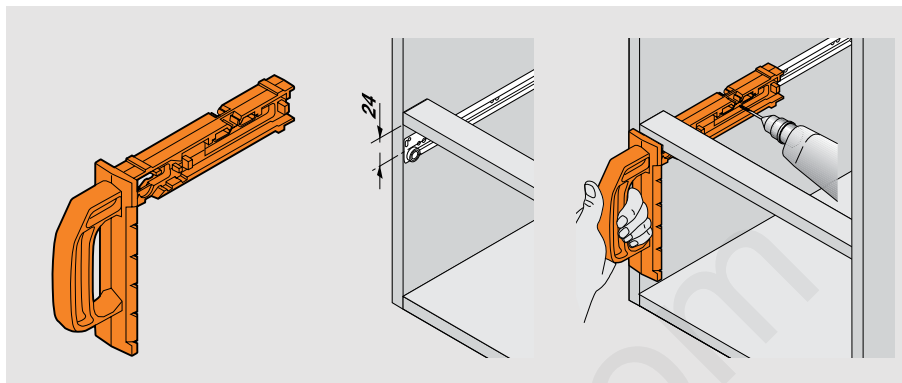
**DB-10mm** Ø10 (3/8") drill bit

## MINIFIX

**For precise positioning of cabinet profile fixing screws.**

For METABOX series 320N, M, K, H  
For runners 230M

65.3300 MINIFIX



## Adjustable calibrated drilling gauge

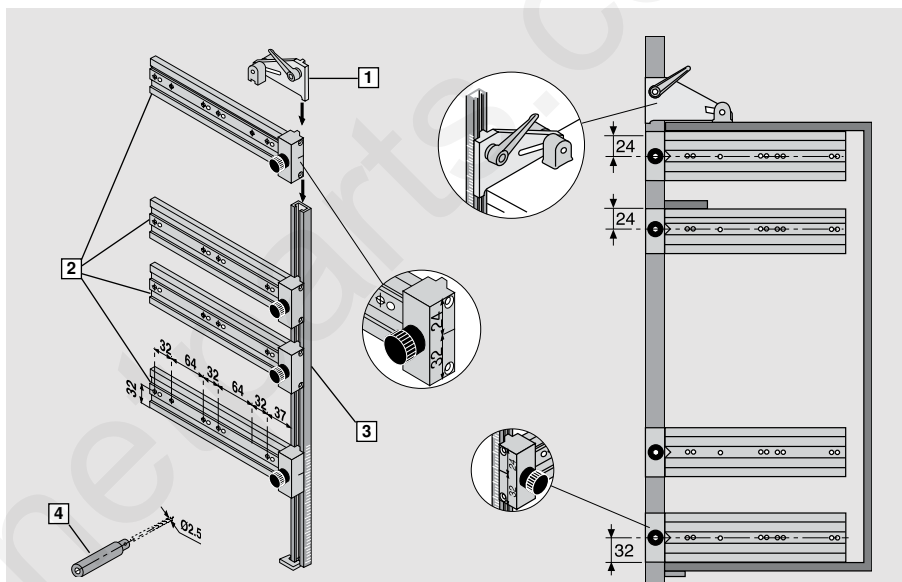
**For determining cabinet profile positions and pilot boring.**

Drilling gauge can be used with assembled or unassembled cabinets. Locates precise and level fixing points of cabinet profiles. Calibrated metric rail works with DynaPlan for locating profile position.

Includes:

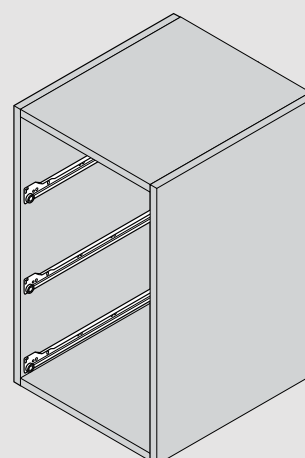
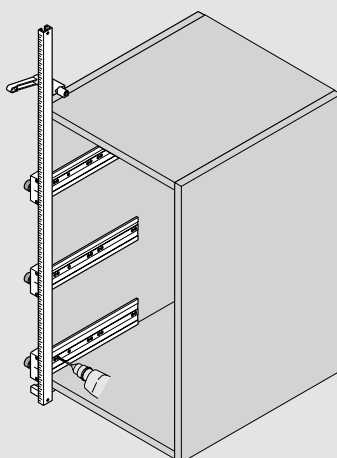
- 1 Clamp assembly
- 2 Templates
- 3 Calibrated rail, length 1000 (39")
- 4 Extension drill bit for Ø2.5 (1/8")

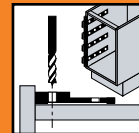
T65.5000.01 Drilling gauge set  
DB-2.5mm Ø2.5 (1/8") drill bit



1. Determine runner locations from DynaPlan or by manual calculation.
2. Set templates on the bar by the scale
3. Clamp assembly to the cabinet side.
4. Bore Ø2.5mm pilot holes for front and middle mounting positions.

5. Fasten runners to cabinet with wood screws.
6. Add screws to back of runner for added strength as required.





## MINIPRESS P - Deluxe boring and insertion machine



### Features:

- Front adjustable boring distance with digital calibration
- Pneumatic hold-down clamps
- Improved boring depth adjustment
- Improved positioning stops (4)
- Tool kit included
- Dust collection attachment
- Accepts optional 7 or 8 spindle boring heads

Single phase - 220V power

Laser center line optional.

Three phase - 220V power

Laser center line optional.

Three phase - 440V power

No laser center line option.

M53.1053.US

M53.1004.US

M53.1005.US

## MINIPRESS P - Standard boring and insertion machine



### Features:

- Front adjustable boring distance
- Improved boring depth adjustment
- Improved positioning stops (4)
- Tool kit included
- Dust collection attachment
- Accepts optional 7 or 8 spindle boring heads

Single phase - 220V power

Laser center line, hold down clamps and digital calibration optional.

M53.1053.UB

## MINIPRESS M - 110V manual boring and insertion machine



### Features:

- 110V power with molded plug (portable)
- Does not require pressurized air
- 4 positioning stops included
- Tool kit included
- Dust collection attachment
- Accepts optional 7 or 8 spindle boring heads

110V power

Boring distance stop kit optional. No laser center line option.

M52.1056.US

## MINIDRILL P -Standard boring machine



### Features:

- Front adjustable boring distance
- Improved boring depth adjustment
- Improved positioning stops (4)
- Tool kit included
- Dust collection attachment
- Accepts optional 7 or 8 spindle boring heads

Single phase- 220V power

Optional hold down clamps, laser center line and digital calibration.

Three phase - 220V power

Optional hold down clamps, laser center line and digital calibration.

Three phase - 440V power

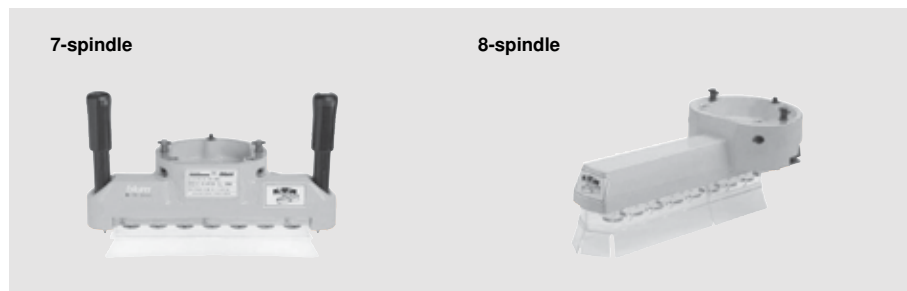
Optional hold down clamps and digital calibration. No laser center line option.

M53.1053.50

M53.1004.50

M53.1005.50

## MINIPRESS boring heads



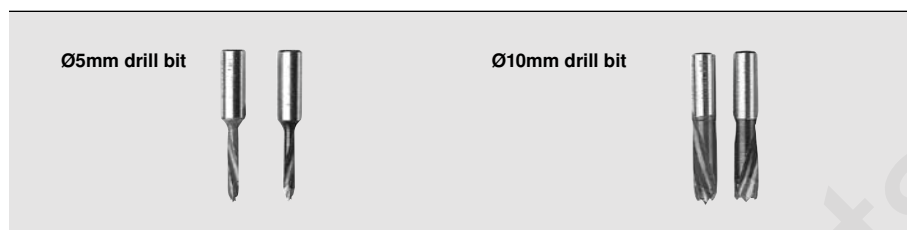
### For line boring with the MINIPRESS.

The 7-spindle head bores 7 holes 32mm apart, parallel to the fence. The 8-spindle head bores 8 holes 32mm apart, perpendicular to the fence. Bores for all METABOX front fixing brackets and galleries.

**MZK.1000.US** 7 spindle boring head

**MZK.8000.US** 8 spindle boring head

## Drill bits



### Drill bits for the MINIPRESS/MINDRILL and boring heads.

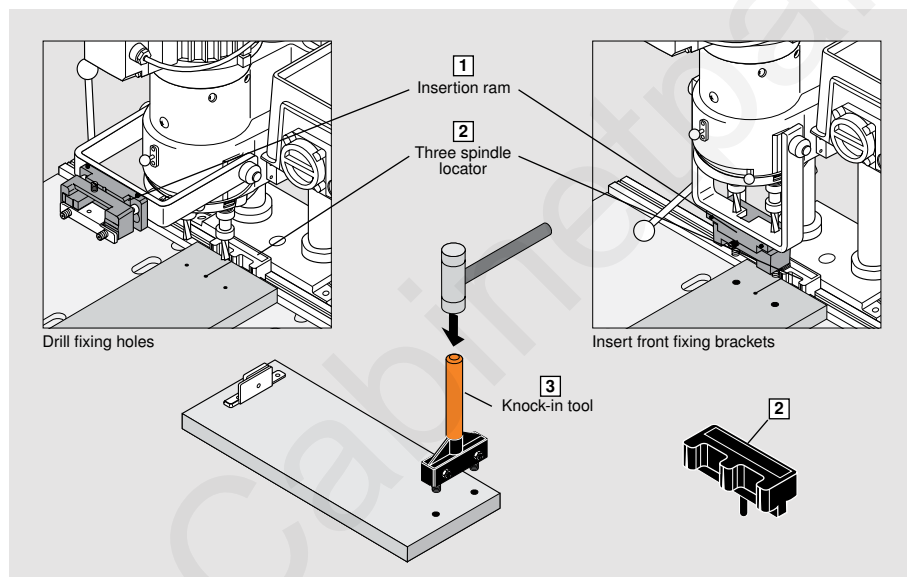
**M01.ZB05.D2** Ø5mm drill bit (right hand)

**M01.ZB05.D3** Ø5mm drill bit (left hand)

**M01.ZB10.02** Ø10mm drill bit (right hand)

**M01.ZB10.03** Ø10mm drill bit (left hand)

## Installation tools



### For location and insertion of front fixing brackets.

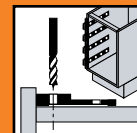
Three spindle locator enables the positioning of the drawer front without using fence stops.

**MZM.0092.01** **1 Insertion ram for MINIPRESS**  
for ZSF.1300 and ZSF.1800

**MZR.2000** **2 Three spindle locator**

**ZME.1600** **3 Knock-in tool**  
for ZSF.1300 and ZSF.1800

**ZME.1610** **3 Knock-in tool**  
for ZSF.1610



## MINISTICK fence stop

Enables fast setup for drawer front boring and front fixing bracket insertion with the MINIPRESS.

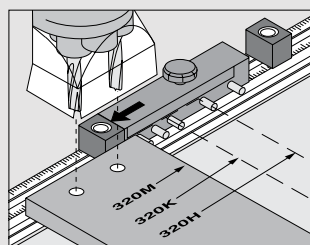
Eliminates the need for multiple fence stops.

Includes:

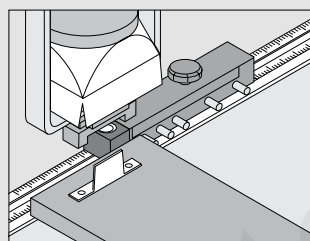
- 1 LH & RH adj. stick mechanism
- 2 (2) Upper drawer stops
- 3 (2) Bottom drawer stops

**MZS.0040** MINISTICK

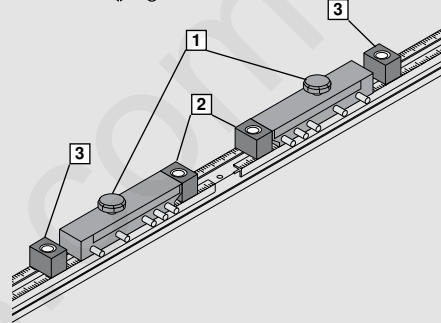
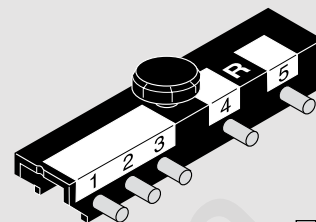
Essential tool for production boring of drawer fronts when using DynaPlan software.



Boring drawer fronts



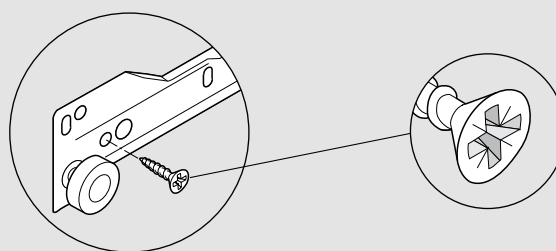
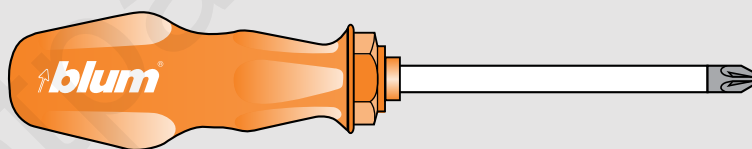
Inserting front fixing brackets



## POZI DRIVER and bits

A POZI screwdriver (different from Phillips) is the most crucial tool you can use to assure that full torque is applied to all Blum adjustment screws. POZI screws can be identified by the distinctive "tick" marks located in the center of the screwhead recess.

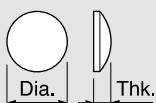
- POZI DRIVER** #2 POZI DRIVER
- BIT HOLDER** 1/4" magnetic bit holder
- POZI BIT #2x1** #2 x 1" POZI bit insert



## Screws and bumpers

### Drawer bumpers

Cushions drawer closing  
Self-adhesive back, clear



- FX4041** 6 (1/4") dia. x 1.5 (1/16") thk.
- SJ5312** 10 (3/8") dia. x 3 (1/8") thk.

### Deep thread system screws

Pilot bore  $\varnothing 5$  (3/16") hole  
Nickel plated

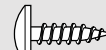


- 661.1150** 11.5 (7/16"), #2 POZI
- 661.1300** 13 (1/2"), #2 POZI
- 661.1450** 14.5 (9/16"), #2 POZI
- 662.1150** 11.5 (7/16"), #2 POZI, small head for C15 METABOX assembly

### Deep thread wood screws



606N/P



612TH

- 606N** #6 x 5/8", #2 Phillips, nickel plated
- 606P** #6 x 5/8", #2 POZI, nickel plated
- 612TH** #6 x 1/2", #2 Phillips, zinc plated