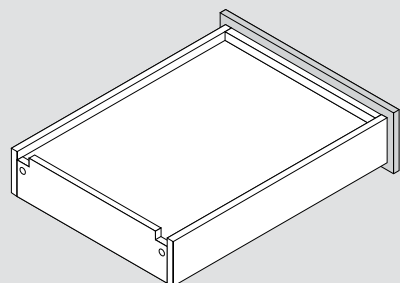




# Drawer preparation

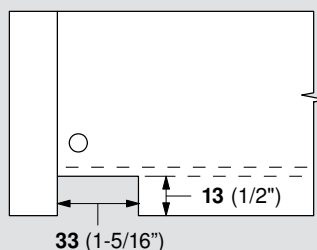
## Rear notching

### Dimensions



Drawers must be notched in the back to accommodate TANDEM runners.

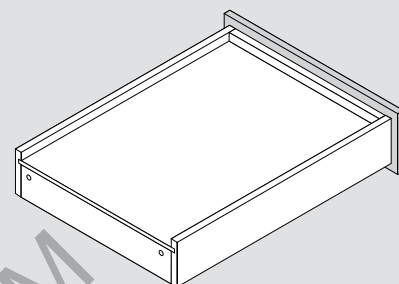
**NOTE:** TIP-ON for TANDEM plus requires **86** (3-3/8")



The notches must be flush with the drawer side and bottom.

page 37

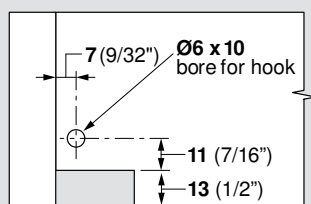
### Option - no notching



Make the back panel shorter and extend the drawer bottom to the back of the drawer.

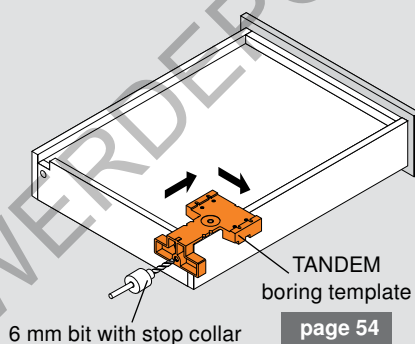
## Rear boring

### Dimensions



Drawers must have 6 mm holes drilled in the back panel to accept the hooks in the back of TANDEM runners.

### Boring



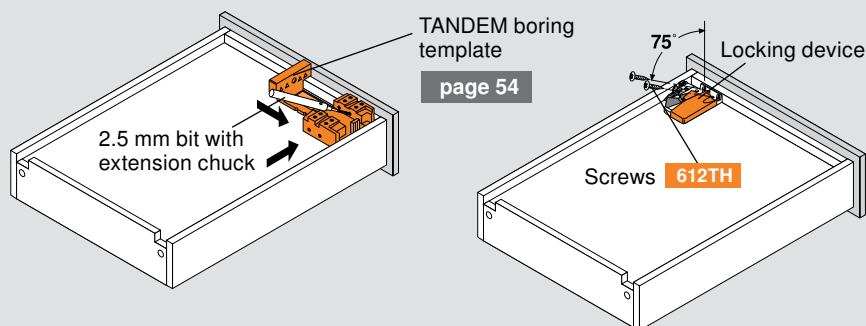
- 1 Place the template over the drawer side
- 2 Position the template so that the center rib rests against the inside face of the drawer side
- 3 Set stop collar on 6 mm bit so that it will bore **10** (3/8") deep
- 4 Hold template firmly and bore hole
- 5 Repeat on other side

page 54

**NOTE:** Using the **T65.1000.02** template is highly recommended

## Locking devices

### Attachment



- 1 Position the 2.5 mm drill bit into the extension chuck so that it extends **10** (3/8") out of the template
- 2 Place template into the front corner of the drawer
- 3 Bore two holes and repeat on other side
- 4 Attach locking devices with #6 x 1/2" truss head screws (612TH)

**NOTE:** Mounting screws must go in at a precise angle and locking device must fit flush to drawer bottom to ensure proper function of the complete drawer system

**NOTE:** Using the **T65.1000.02** template is highly recommended