

BLUMOTION 971A for Euro hinges

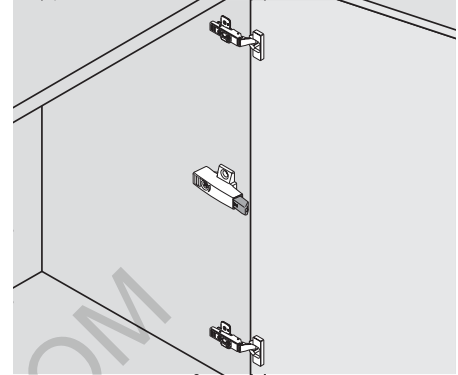
Product



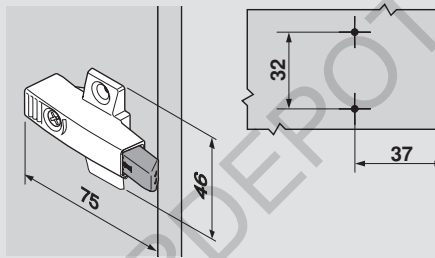
Description

- Quiet closing feature for CLIP top and CLIP straight-arm hinges
- Offers the same quality of motion as drawer systems with BLUMOTION
- Adjustable to various door sizes and weights (+3/-7 mm range)
- Installed onto hinge-side panel
- Nickel plated zinc die-cast construction
- For use with straight-arm hinge and either 0 mm or 3 mm mounting plate only

Application



Wing plate (screw-on)

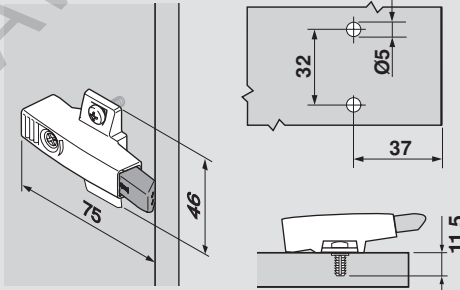


- 37 mm setback, 32 mm apart

Part no.

0 mm	971A0500
3 mm	971A2500
Installation screw	606P or 606N

Wing plate (EXPANDO)

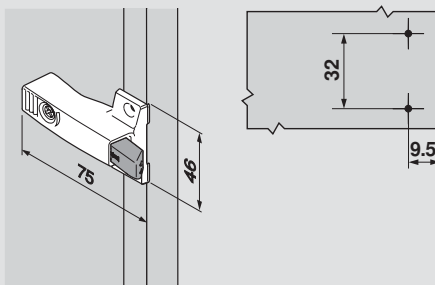


- 37 mm setback, 32 mm apart
- Attached with pre-mounted screws with 5 mm EXPANDO dowels

Part no.

0 mm	971A05E0
3 mm	971A25E0

Face frame adapter plate (screw-on)



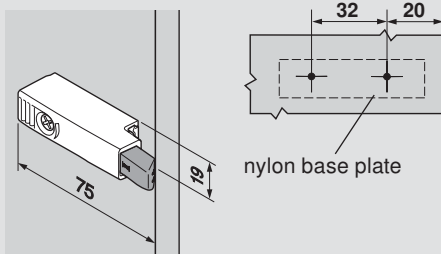
- 9.5 mm setback, 32 mm apart

Part no.

0 mm	971A0700
3 mm	971A2700
Installation screw	606P or 606N



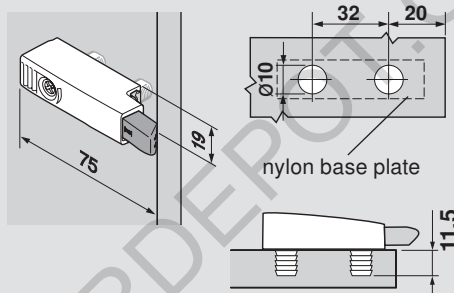
Two piece in-line plate (screw-on)



- Two-piece design
- 20 mm setback, 32 mm apart

Part no.	
0 mm	971A0200
3 mm	971A2200
Installation screw	606P or 606N

Two piece in-line plate (press-in)



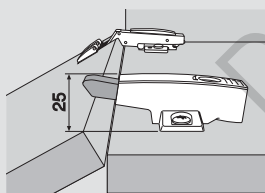
- Two-piece design
- 20 mm setback, 32 mm apart
- 10 mm dowels

Part no.	
0 mm	971A0230
3 mm	971A2230

Specifications

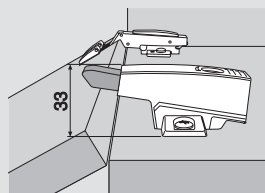
0 mm BLUMOTION application

For all hinges with a straight-arm and a 0 mm mounting plate.



3 mm BLUMOTION application

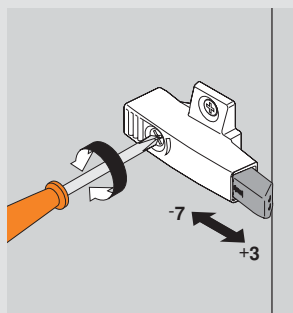
For all hinges with a straight-arm and a 3 mm mounting plate.



NOTE: 95° thick door straight-arm hinge requires 3 mm BLUMOTION

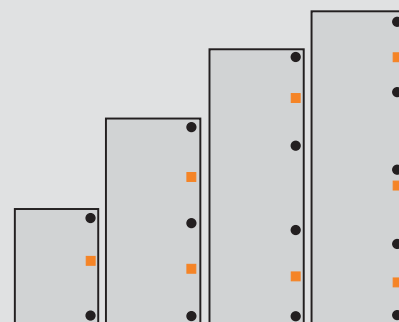
Adjustment

Use a Phillips or POZI screwdriver to adjust the contact point in or out (+3/-7 mm). Adjust out for larger, heavier doors or adjust in for smaller, lighter doors.



BLUMOTION per door

- For optimum BLUMOTION effect, BLUMOTION 971A should be installed onto the hinge side panel centered between the two hinges
- Tall or heavy doors may require an additional BLUMOTION 971A between the hinges
- Trial application recommended



- BLUMOTION 971A
- Hinges