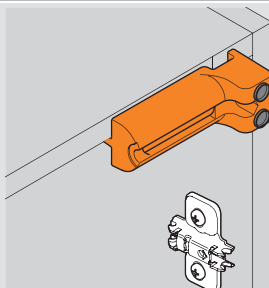


Accessories

Boring template



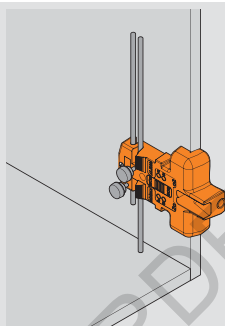
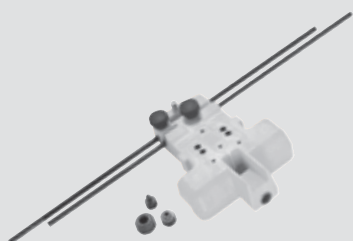
- For pre-boring BLUMOTION 970A and TIP-ON for doors in the end panel
- Ø10 mm drill bushing for edge boring
- Includes Ø10 mm stop collar
- Bores left and right side of cabinet

Part no.

Boring template

65.5010

BLUMOTION for doors boring template



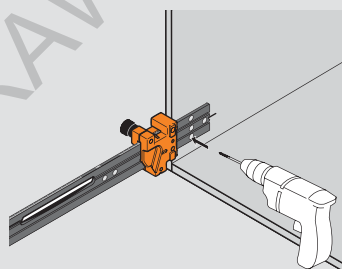
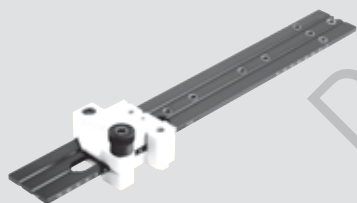
- For pre-boring BLUMOTION 970A and TIP-ON for doors in the end panel
- Also used for pre-boring of BLUMOTION for doors and TIP-ON for doors adapters
- Also used for pre-boring wing mounting plates and 20 mm setback in-line mounting plates for hinges
- Includes Ø10 mm, Ø5 mm and Ø2.5 mm stop collars
- Vertical guides for setting height
- Bores left and right side of cabinet

Part no.

BLUMOTION boring template

65.5000

Universal Individual template



- For pre-boring of BLUMOTION for doors and TIP-ON for doors adapters
- Also used for pre-boring wing mounting plates and in-line mounting plates for hinges
- Calibrated scale for accurate setting

Includes:

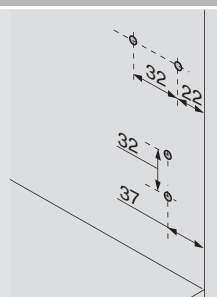
- Universal individual template
- Ø2.5 mm and Ø5 mm stop collars

Part no.

Template

955.1004

22 mm setback mounting plate template



- For pre-boring BLUMOTION for doors and TIP-ON for doors wing adapters
- Also used for pre-boring wing mounting plates and 22 mm setback in-line mounting plates for hinges
- Transfers measurements from door to cabinet
- Pilot bores Ø2.5 mm holes for wood screws

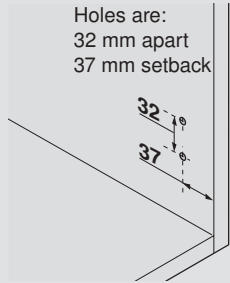
Part no.

Mounting plate template

65.5310



ECOJIG boring template for mounting plates



- Used to pre-bore Ø5 mm holes for system screws
- Includes Ø5 mm stop collar

Part no.

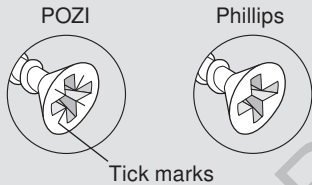
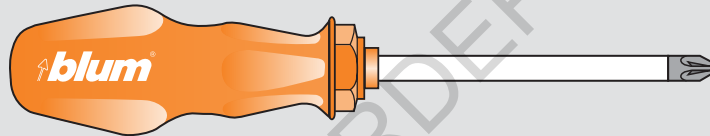
ECOJIG

65.5070

Conversion Chart

Inch		mm
1/32	.031	1
1/16	.063	1.5
3/32	.094	2
1/8	.125	3
5/32	.156	4
3/16	.188	5
7/32	.219	5.5
1/4	.25	6
9/32	.281	7
5/16	.313	8
11/32	.344	9
3/8	.375	9.5
13/32	.406	10
7/16	.438	11
15/32	.469	12
1/2	.5	13
17/32	.531	13.5
9/16	.563	14
19/32	.594	15
5/8	.625	16
21/32	.656	17
11/16	.688	17.5
23/32	.719	18
3/4	.75	19
25/32	.781	20
13/16	.813	20.5
27/32	.844	21
7/8	.875	22
29/32	.906	23
15/16	.938	24
31/32	.969	24.5
1	1	25.4

POZI DRIVER and bits



A POZI screwdriver (different from Phillips) is the most crucial tool you can use to assure that full torque is applied to all Blum mounting screws. POZI screws can be identified by the distinctive "tick" marks located in the center of the screw head recess.

Part no.

#2 POZI DRIVER

POZI DRIVER

1/4" bit holder

BIT HOLDER

#2 x 1" POZI bit insert

POZI BIT #2x1

#2 x 2" POZI bit insert

POZI BIT #2x2

Drill bits

RH twist drill bit



Part no.

Ø2.5 mm

DB-2.5mm

Ø5 mm

DB-5mm

Ø10 mm

DB-10mm

Deep thread wood screws



Part no.

#6 x 5/8", #2 Phillips

606N

#6 x 5/8", #2 POZI

606P

#8 x 1-1/4" type 17

8114Z

#8 x 2" type 17

8200Z