

Drawer assembly



Box system front template

- Used for marking the front fixing bracket locations on the drawer fronts for drawers that are already installed in the cabinet
- For one time jobs or production runs
- Eliminates need for calculations and is very accurate

For METABOX 320/330 M,K & H

Part no.

ZML.1500

For METABOX 320N

ZML.1510

For TANDEMBOX 358M

ZML.3580

For METABOX galleries

ZML.8000.02

For TANDEMBOX galleries

ZML.3600

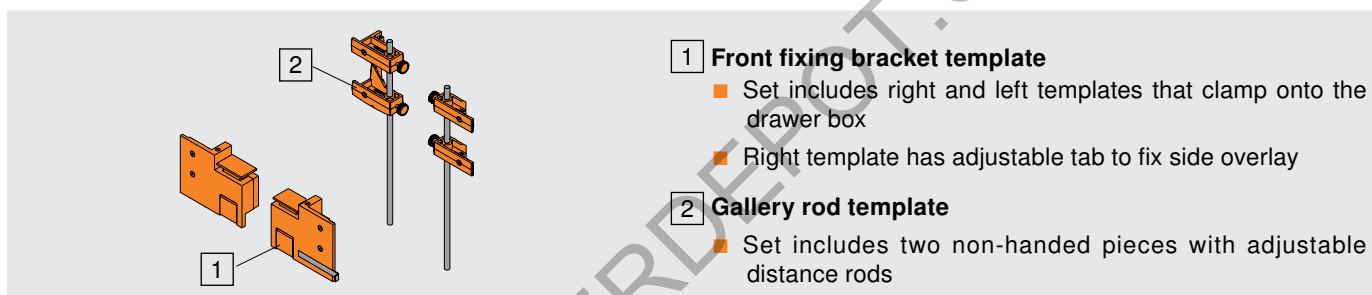
Accessories (order separately)

Part no.

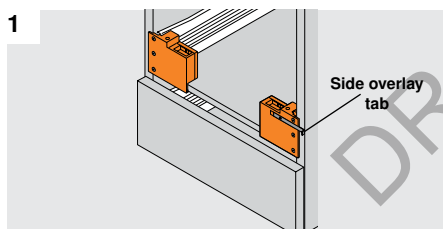
Ø10mm drill bit

DB-10mm

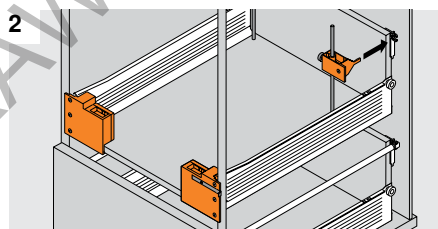
Specifications



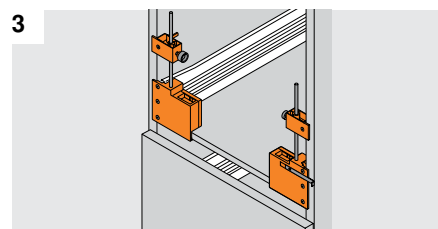
Using the box system front template



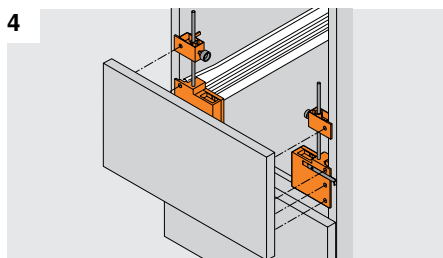
Place marking templates on installed drawer. Place integral spring clamps to drawer bottom.



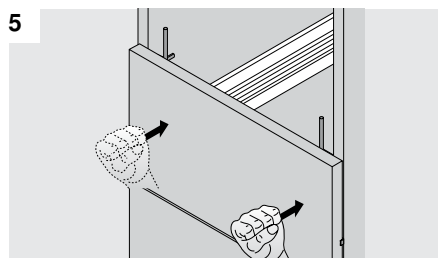
If galleries are used, place gallery template into rear bracket then adjust rod so it rests on the drawer bottom.



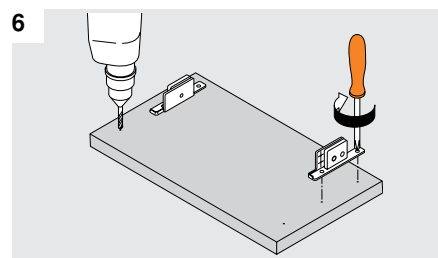
Place gallery templates into the top of the marking templates so that rods rest on the drawer bottom.



Adjust side overlay tab. Place drawer front against the templates and make sure drawer front is correctly spaced from the drawer front beneath.



Hold the drawer front in place and tap it by hand to transfer the points of the templates to the back of the drawer front.



Attach the front fixing brackets with wood screws or use the marks to assist in setting up for production boring. Bore Ø10mm holes for INSERTA gallery rods.