



# MOVENTO

The Evolution of Motion

[blum.com](http://blum.com)

 **blum**<sup>®</sup>

# MOVENTO

MOVENTO is the latest advancement in concealed runner technology. It brings together all of the features, innovations and benefits that Blum has developed since first manufacturing drawer runners in the 1960s.

TIP-ON BLUMOTION for MOVENTO is a solution which combines the advantages of both TIP-ON and BLUMOTION, for wood drawers. This combination ensures that drawers open with just a light touch, have a smooth running action, and a silent and effortless closing action.

 **blum**



## Contents

### MOVENTO

- 4** General Specifications
- 6** Using MOVENTO
- 8** MOVENTO 763. Standard Duty
- 10** MOVENTO 769. Heavy Duty
- 12** TIP-ON BLUMOTION for MOVENTO
- 19** Bottom Mount Drawer – Standard Duty
- 20** Lateral Stabilizer for 763./769.
- 22** Locking Devices
- 23** Assembly Aids
- 24** Waste/Recycle Drawer with Motion Technologies
- 26** Bottom Mount Drawer – Heavy Duty
- 29** Part Number Index

# MOVENTO



## Complete Runner System

- Designed to be used with TIP-ON BLUMOTION touch-to-open system
- Full extension concealed runners with BLUMOTION soft close
- Zinc-coated steel
- Concealed roller carriage with permanently lubricated synthetic rollers
- Available in standard and heavy duty
- Designed for drawers using 5/8" drawer material thickness
- Bottom mount holes on 763. standard duty
- Elongated holes for depth adjustment
- Tool-free tilt adjustment
- Tool-free height adjustment
- Tool-free rear side-to-side adjustment

## Locking Devices

- Stamped steel base with synthetic, spring-loaded release levers
- Captive right device, self-aligning left device
- Self-adjusting drawer length tolerance
- Tool-free front side-to-side adjustment
- Available for narrow drawers

## TIP-ON BLUMOTION

- Enables MOVENTO drawers to be opened with just a light touch of the drawer front and retain BLUMOTION soft closing action
- Fully mechanical motion
- Can be used with or without pulls

## One Runner for All Applications

MOVENTO runners are designed for the American 3" increment cabinet depth system. Installation is possible in frameless or blocked-out face frame cabinets.

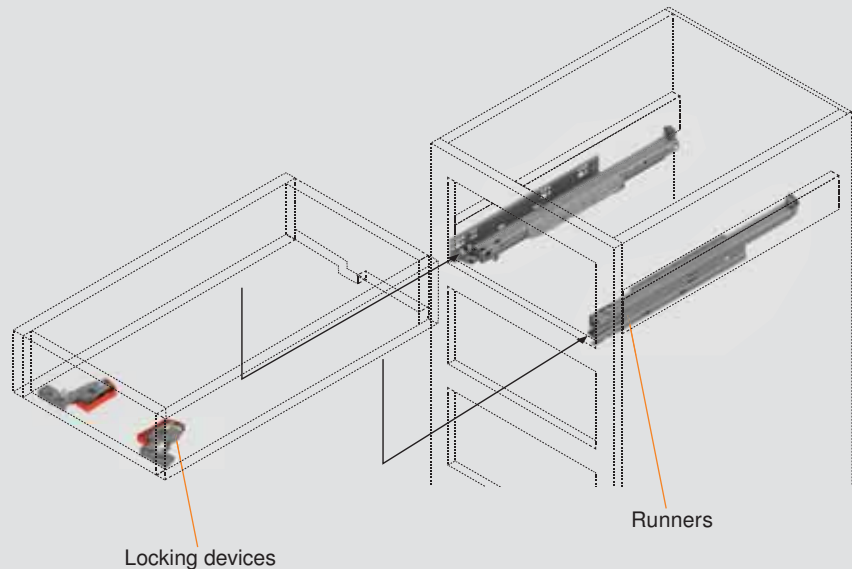
## Load Capacities

- 125 lb static for MOVENTO 763. standard duty series
- 170 lb static for MOVENTO 769. heavy duty series

## General Specifications

### Drawer components

**NOTE:** For 763. and 769. series, rear brackets and sockets cannot be used. Cabinet sides must be blocked-out flush with the inside of the face frame.



### Locking devices

Locking devices allow easy insertion and removal of drawers.



page 22

### TIP-ON BLUMOTION

TIP-ON BLUMOTION is a fully mechanical touch-to-open solution combined with the soft close of BLUMOTION.



page 12

### Concealed Runner Template

A required assembly aid for the pre-boring of MOVENTO locking device screw holes and rear hook holes.

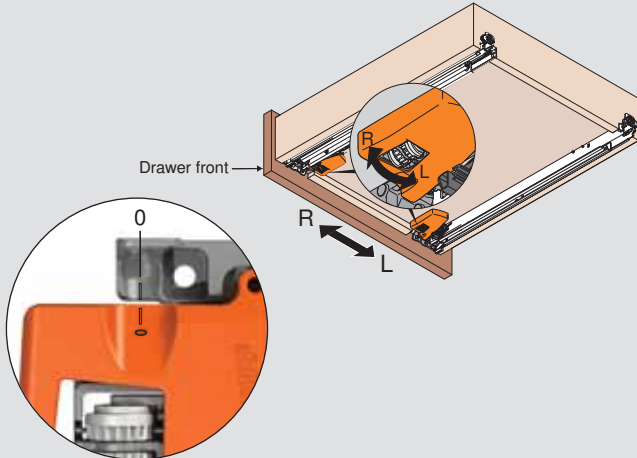


page 23

**Front side-to-side adjustment**

- 1 Rotate side-to-side adjustment left or right equally on both locking devices. Drawer front moves in the same direction as rotation.

**T51.7601.xx** with side-to-side adjustment

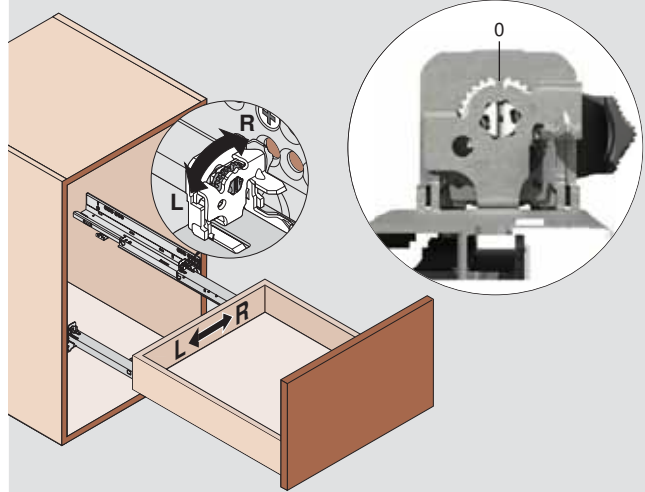


Maximum 1.5 (1/16") to left or right (tool-free)

**NOTE:** Not available on T51.0501.20 narrow locking devices

**Rear side-to-side adjustment**

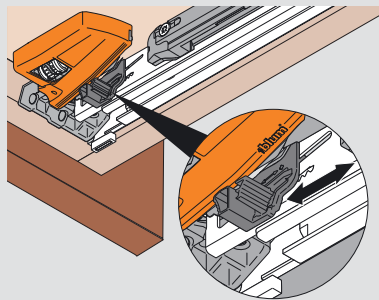
- 2 After front side-to-side adjustment is made with the locking devices, rotate the rear side-to-side adjustment left or right to re-align the back of the drawer box with the front. Drawer back moves in the same direction as rotation.



Maximum 1.5 (1/16") to left or right (tool-free)

**Height adjustment**

Press up on adjustment tab and push toward back of drawer.

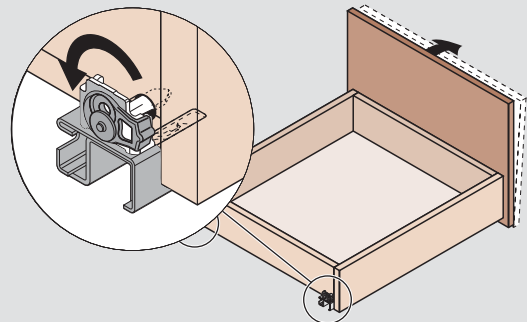


Maximum 3 (1/8") rise of drawer front (tool-free)

**NOTE:** Height adjustment available on all MOVENTO runners

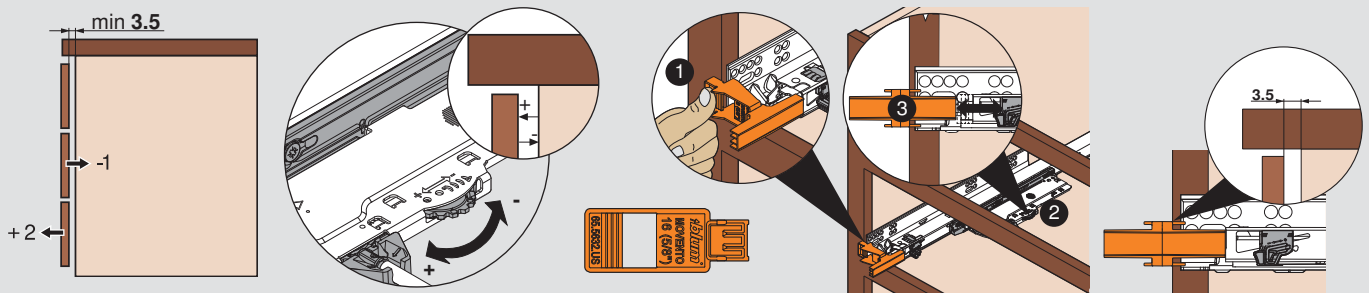
**Tilt adjustment**

Rotate the tilt adjustment lever on the rear of each runner to tilt the top of the drawer front forward



Maximum 5 (3/16") rise of drawer back (tool-free)

**Depth adjustment**



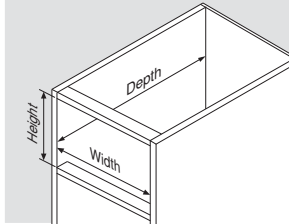
**Step 1**

**Measure cabinet opening**

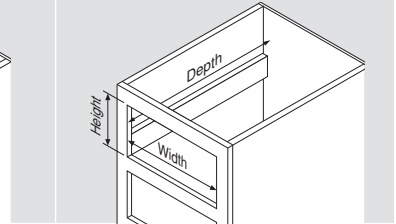
Cabinet opening measurements are needed to determine drawer box size.

**NOTE:** In face frame applications, cabinet sides must be blocked-out flush with the inside of the face frame.

**Frameless Cabinet**



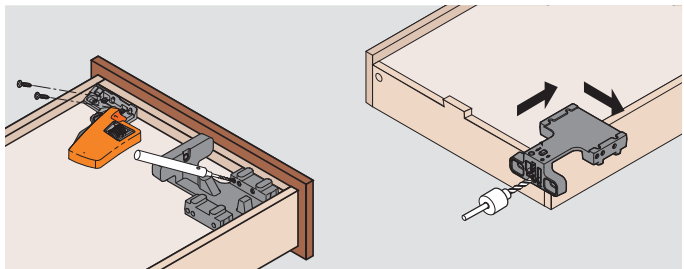
**Frame Cabinet**



**Step 2**

**Preparing drawer boxes**

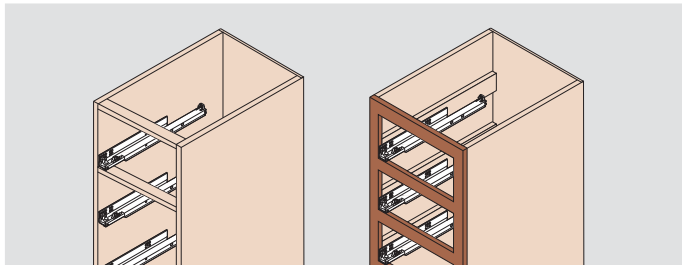
Build drawers according to the specifications given for the MOVENTO runners you chose and the measurements determined in Step 1. Install appropriate locking devices and bore holes to accept rear hooks.



**Step 3**

**Attach runners to cabinet**

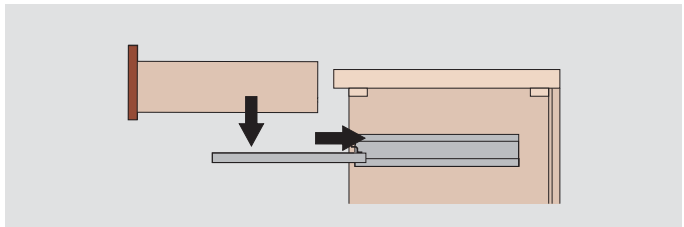
Using the mounting information given for the MOVENTO runners you chose, mount the MOVENTO runners in the cabinet.



**Step 4**

**Insert drawers**

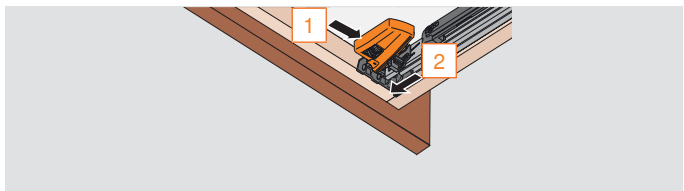
Extend the runners fully. Place the drawer on the runners and close. The locking devices automatically engage with the runners. Make adjustments if necessary.



**Step 5**

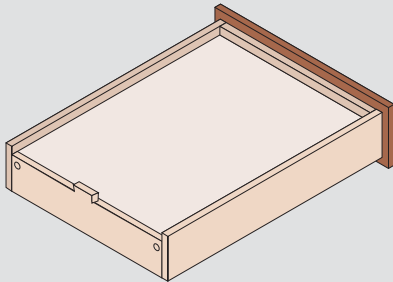
**Drawer removal**

Squeeze orange handles on locking devices and pull drawer straight out and up.



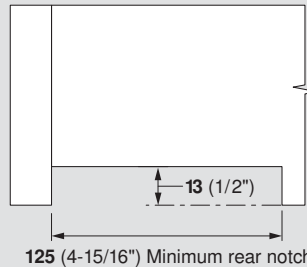
Rear Notching

Dimensions



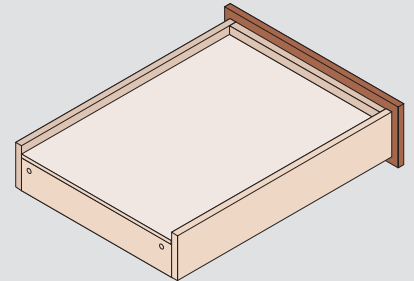
Drawers must be notched in the back to accommodate MOVENTO runners

Rear view



The notches must be flush with the drawer sides and bottoms

Option – no notching

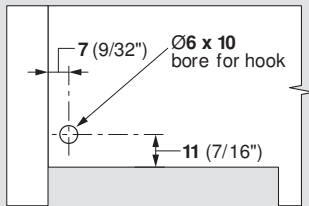


Make the back panel shorter and extend the drawer bottom to the back of the drawer

Rear Boring

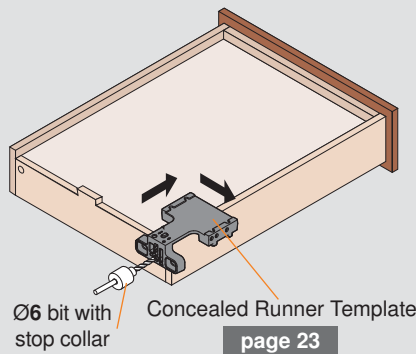
Dimensions

Rear view



Drawers require Ø6 holes bored on each side of the back panel to accept the hooks on the back of MOVENTO runners

Boring

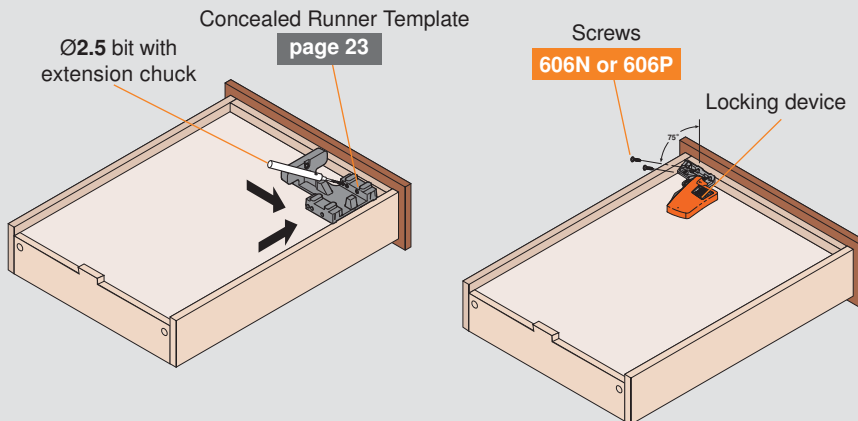


- 1 Place template over the drawer side
- 2 Position template so that the center rib rests against the inside face of the drawer side
- 3 Set stop collar on Ø6 bit so that it will bore 10 (13/32") deep
- 4 Hold template firmly and bore hole
- 5 Repeat on other side

**NOTE:** Using the T65.1600.01 Concealed Runner Template is highly recommended

Locking Devices

Installation



- 1 Position the Ø2.5 drill bit into the extension chuck so that it will bore 10 (13/32") deep
- 2 Place template into the front corner of the drawer
- 3 Bore two holes and repeat on other side
- 4 Attach locking devices with #6 x 5/8" deep thread wood screws (606N or 606P)

**NOTE:** The mounting screws must go in at a precise angle and the locking device must fit flush to the drawer bottom to ensure proper function of the complete drawer system

**NOTE:** Using the T65.1600.01 Concealed Runner Template is highly recommended



Application



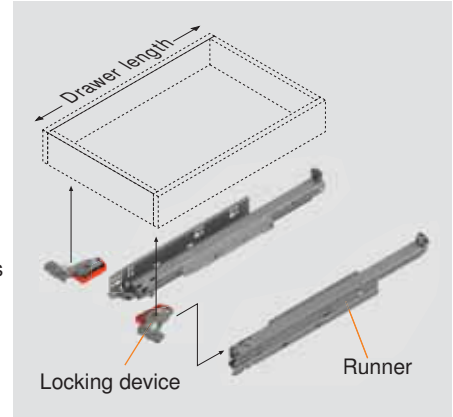
Features

- Four-dimensional adjustment
- Elongated holes for depth adjustment
- Bottom mount holes
- 125 lb static load capacity

Description

- Designed to be used with TIP-ON BLUMOTION touch-to-open system
- Full extension concealed runners
- Frameless or blocked-out face frame cabinets
- BLUMOTION soft closing
- MOVENTO smooth running action
- Available in 12" to 21" lengths
- 16 (5/8") drawer thickness

Basic Components



Components

Runner set

One set required per drawer



For overall cabinet depth	Drawer length	MOVENTO
610 (24")	533 (21")	763.5330M
533 (21")	457 (18")	763.4570M
457 (18")	381 (15")	763.3810M
381 (15")	305 (12")	763.3050M
Wood screw for installation		606N or 606P
System screw for installation		662.1150.HG

Standard locking device with side-to-side adjustment



- One right and one left required per drawer
- Captive right and self-aligning left device
- Self-adjusting drawer length tolerance
- Steel base with synthetic, spring-loaded release levers
- Minimum inside drawer width 170 (6-11/16")
- Side-to-side adjustment ±1.5 (1/16")
- For use with MOVENTO runners only
- For other options see page 22

Part no.

Right locking device **T51.7601 R**

Installation Left locking device **T51.7601 L**

page 7 Installation screw **606N or 606P**

TIP-ON BLUMOTION

- Enables MOVENTO drawers to be opened with just a light touch of the drawer front and retain BLUMOTION soft closing action
- Fully mechanical motion
- Can be used with or without pulls
- Minimum inside drawer width 281 (11-1/16")



page 12



## Drawer and Cabinet Specifications

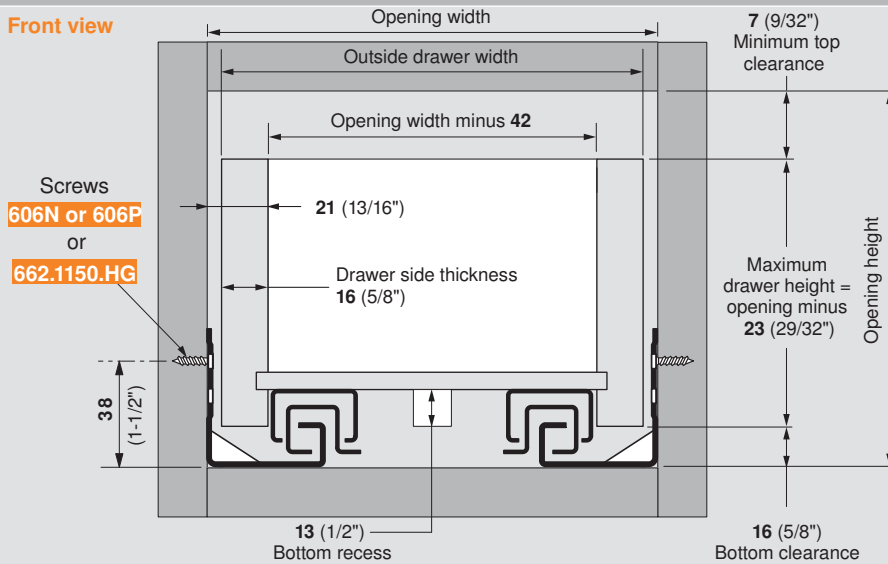
Drawer thickness	16 (5/8")
Lengths available	12" - 21"
Static load capacity	125 lb

## MOVENTO



### Drawer box specifications

#### Front view



**NOTE:** Drawer side material thickness may vary. Accurate measurement of drawer side material thickness should be used when calculating outside drawer width using the table below. Inside drawer width **must** equal opening width minus 42 (1-21/32") for MOVENTO runners to align and function optimally.

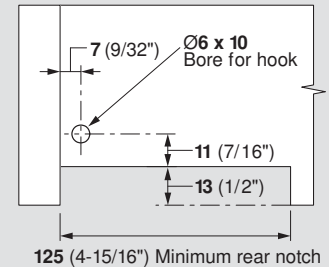
#### Calculating outside drawer width

For drawer side thickness	16 (5/8")
Deduct from opening width	10 (13/32")

**Example:** For 21" opening width and a 5/8" thick drawer, 21" minus 13/32" = 20-19/32" drawer width

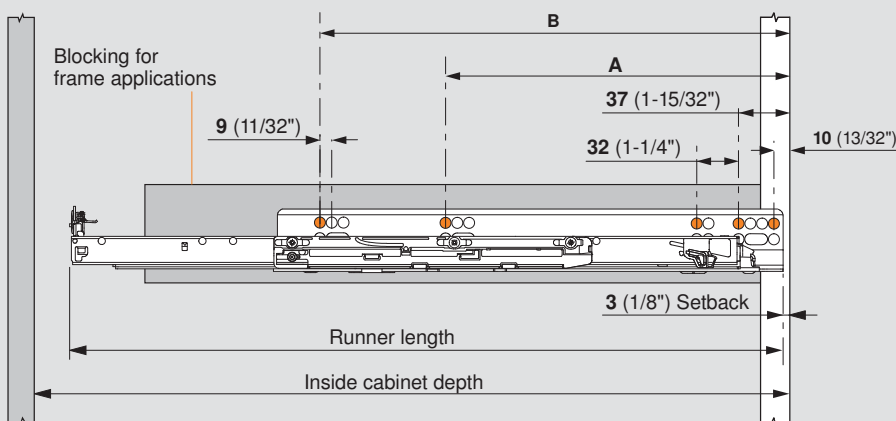
### Drawer back preparation

#### Rear view



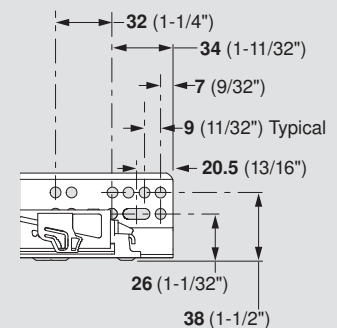
### Runner mounting specifications

#### Side view



**NOTE:** The orange dots indicate fixing screw locations required to meet specified load ratings

#### Runner close-up



**NOTE:** Elongated holes are for ±4.5 (3/16") depth adjustment only. Additional screws must be used to secure the runner to the cabinet.

MOVENTO	Drawer length	Minimum inside cabinet depth	Runner length	Screw location	
				A	B
763.5330M	533 (21")	553 (21-13/16")	544 (21-7/16")	261 (10-9/32")	357 (14-1/16")
763.4570M	457 (18")	477 (18-13/16")	468 (18-7/16")	261 (10-9/32")	357 (14-1/16")
763.3810M	381 (15")	401 (15-13/16")	392 (15-7/16")	165 (6-1/2")	357 (14-1/16")
763.3050M	305 (12")	325 (12-13/16")	316 (12-7/16")	165 (6-1/2")	261 (10-9/32")

# MOVENTO



## MOVENTO 769. Heavy Duty

### Application



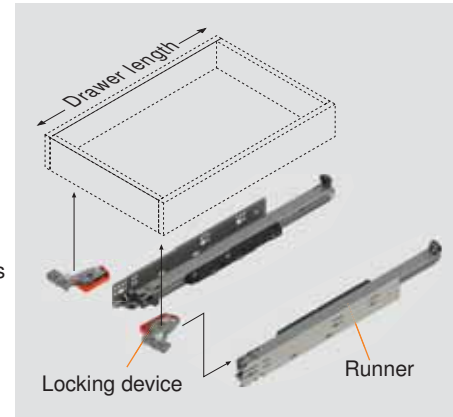
### Features

- Four-dimensional adjustment
- Elongated holes for depth adjustment
- Bottom mount holes
- 170 lb static load capacity

### Description

- Designed to be used with TIP-ON BLUMOTION touch-to-open system
- Full extension concealed runners
- Frameless or blocked-out face frame cabinets
- BLUMOTION soft closing
- MOVENTO smooth running action
- Available in 18" to 24" lengths
- 16 (5/8") drawer thickness

### Basic Components



### Components

#### Runner set

One set required per drawer



For overall cabinet depth	Drawer length	MOVENTO
686 (27")	610 (24")	769.6100M
610 (24")	533 (21")	769.5330M
533 (21")	457 (18")	769.4570M
Wood screw for installation		606N or 606P
System screw for installation		662.1150.HG

#### Standard locking device with side-to-side adjustment



- One right and one left required per drawer
- Captive right and self-aligning left device
- Self-adjusting drawer length tolerance
- Steel base with synthetic, spring-loaded release levers
- Minimum inside drawer width 170 (6-11/16")
- Side-to-side adjustment  $\pm 1.5$  (1/16")
- For use with MOVENTO runners only
- For other options see page 22

Part no.

Right locking device **T51.7601 R**

Installation Left locking device **T51.7601 L**

page 7 Installation screw **606N or 606P**

#### TIP-ON BLUMOTION

- Enables MOVENTO drawers to be opened with just a light touch of the drawer front and retain BLUMOTION soft closing action
- Fully mechanical motion
- Can be used with or without pulls
- Minimum inside drawer width 281 (11-1/16")



page 12

## Drawer and Cabinet Specifications

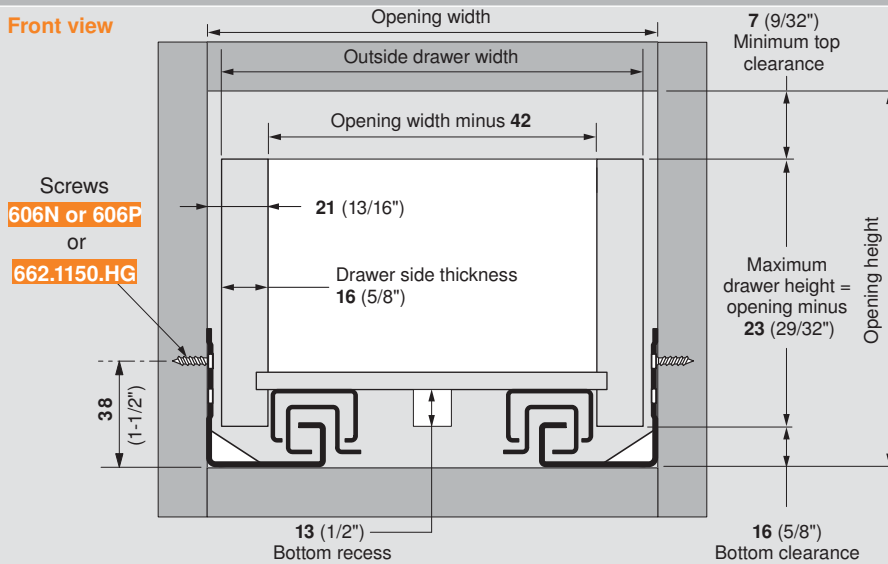
Drawer thickness	16 (5/8")
Lengths available	18" - 24"
Static load capacity	170 lb

## MOVENTO



### Drawer box specifications

#### Front view



**NOTE:** Drawer side material thickness may vary. Accurate measurement of drawer side material thickness should be used when calculating outside drawer width using the table below. Inside drawer width **must** equal opening width minus 42 (1-21/32") for MOVENTO runners to align and function optimally.

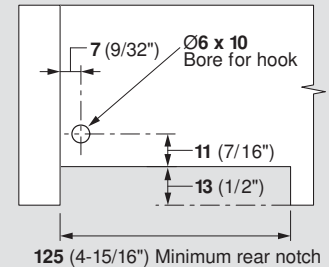
#### Calculating outside drawer width

For drawer side thickness	16 (5/8")
Deduct from opening width	10 (13/32")

**Example:** For 21" opening width and a 5/8" thick drawer, 21" minus 13/32" = 20-19/32" drawer width

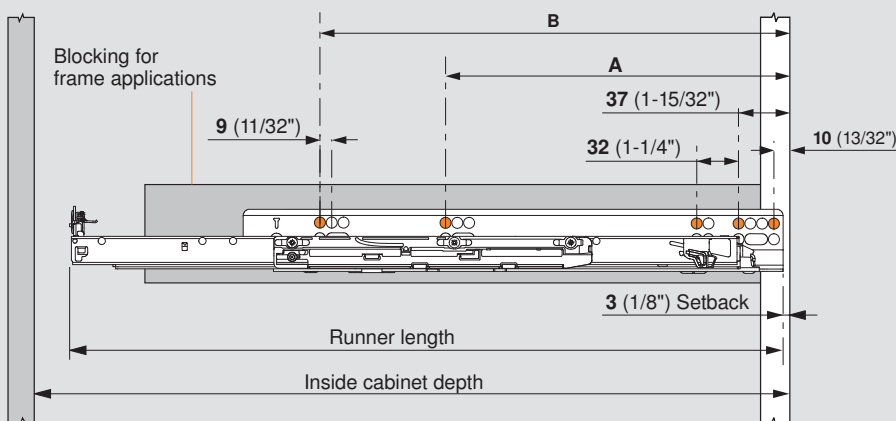
### Drawer back preparation

#### Rear view

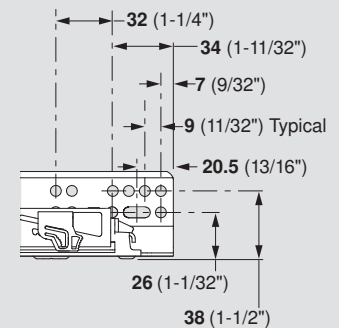


### Runner mounting specifications

#### Side view



#### Runner close-up



**NOTE:** Elongated holes are for ±4.5 (3/16") depth adjustment only. Additional screws must be used to secure the runner to the cabinet.

**NOTE:** The orange dots indicate fixing screw locations required to meet specified load ratings

MOVENTO	Drawer length	Minimum inside cabinet depth	Runner length	Screw location	
				A	B
769.6100M	610 (24")	630 (24-13/16")	621 (24-7/16")	261 (10-9/32")	389 (15-5/16")
769.5330M	533 (21")	553 (21-13/16")	544 (21-7/16")	261 (10-9/32")	357 (14-1/16")
769.4570M	457 (18")	477 (18-13/16")	468 (18-7/16")	261 (10-9/32")	357 (14-1/16")



**Simple, tool-free assembly**

The TIP-ON BLUMOTION unit can be assembled tool-free



**Reliable Function**





TIP-ON BLUMOTION remains functional at all times. Even if the drawer is manually pulled open or pushed closed, TIP-ON BLUMOTION works great the next time it's needed.

# TIP-ON BLUMOTION for MOVENTO

TIP-ON BLUMOTION for MOVENTO provides flexibility by offering the TIP-ON unit in four different strengths.

Use the table below to select the appropriate unit and trigger by finding your drawer runner length and estimating the total weight of the drawer when loaded. A synchronization rod is recommended for all cabinet widths for optimal function.



MOVENTO	TIP-ON BLUMOTION Units and Triggers	
	Standard Duty	 S1 – Light gray
	Standard Duty	 L1 – Light gray
	Standard Duty	 L3 – Dust gray
	Heavy Duty	 L5 – Black

## Optimal Opening and Closing Function

Drawer length	Unit	Part number	Total weight of drawer, when loaded							
			<22 lb	44 lb	66 lb	88 lb	110 lb	132 lb	155 lb	
305 (12")	S1	T60L7140	0 - 44 lb							
381 (15") — 533 (21")	L1	T60L7340	0 - 44 lb							
381 (15") — 533 (21")	L3	T60L7540		44 - 88 lb						
457 (18") — 610 (24")	L5	T60L7570			88 - 155 lb					

# MOVENTO



## TIP-ON BLUMOTION for MOVENTO

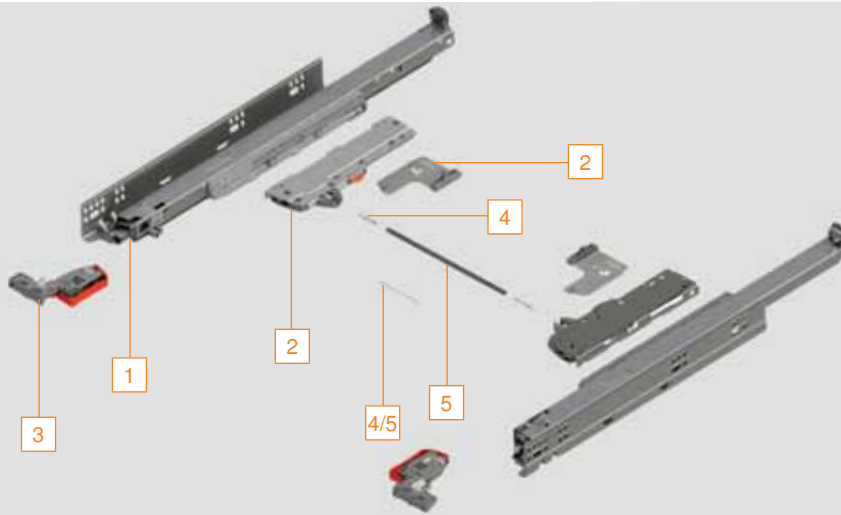
### Application



### Description

- Enables MOVENTO drawers to be opened with just a light touch of the drawer front
- Same installation dimensions as MOVENTO
- Fully mechanical motion
- Smooth running action
- Four-dimensional adjustment
- Load capacity of runner remains unchanged
- Can be used with or without pulls

### Components



**NOTE:** Parts identified below and on the next page

### TIP-ON BLUMOTION for MOVENTO

#### Sets include:

- Left and right MOVENTO runners
- Left and right TIP-ON units and triggers

**1** Left and right MOVENTO runners



**2** Left and right TIP-ON unit and trigger




For overall cabinet depth	Drawer length	Dynamic load capacity		S1	L1	L3	L5
		110 lb	155 lb	0 - 44 lb	0 - 44 lb	44 - 88 lb	88 - 155 lb
686 (27")	610 (24")		769.6100M				T60L7570
610 (24")	533 (21")	763.5330M	769.5330M		T60L7340	T60L7540	T60L7570
533 (21")	457 (18")	763.4570M	769.4570M		T60L7340	T60L7540	T60L7570
457 (18")	381 (15")	763.3810M			T60L7340	T60L7540	
381 (15")	305 (12")	763.3050M		T60L7140			
Installation wood screw		606N or 606P					
Installation system screw		662.1150.HG					



**Standard locking device with side-to-side adjustment**

**3**




- One right and one left required per drawer
- Captive right and self-aligning left device
- Self-adjusting drawer length tolerance
- Steel base with synthetic, spring-loaded release levers
- Minimum inside drawer width **170** (6-11/16")
- Side-to-side adjustment  $\pm 1.5$  (1/16")
- For use with MOVENTO runners only
- For other options see page 22

Part no.

	Right locking device	<b>T51.7601 R</b>
Installation	Left locking device	<b>T51.7601 L</b>
<b>page 7</b>	Installation screw	<b>606N or 606P</b>

**TIP-ON BLUMOTION for MOVENTO front gap template**




- For creating a **3.5** (1/8") front gap

Part no.

		<b>65.5632.US</b>
--	--	-------------------

**TIP-ON BLUMOTION synchronization**

**4**




- To be used with the optional synchronization rod
- Two needed per application

Part no.

	Synchronization adapters	<b>T60.000D</b>
--	--------------------------	-----------------

**5**




- Opening width:  
Minimum = **314** (12-3/8")  
Maximum = **1385** (54-1/2")
- Length **1118** (44-1/32"), cut to size

Part no.

	Synchronization rod	<b>T60L1118W</b>
--	---------------------	------------------

**TIP-ON BLUMOTION synchronization for narrow applications**

**4/5**

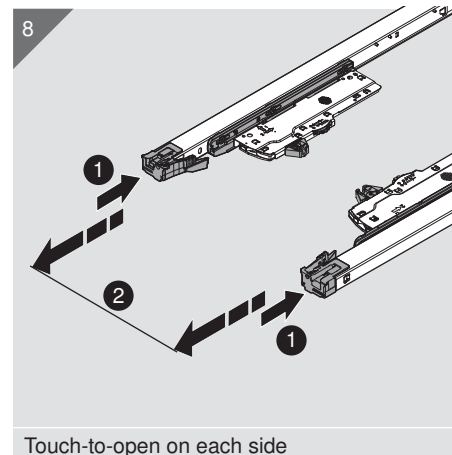
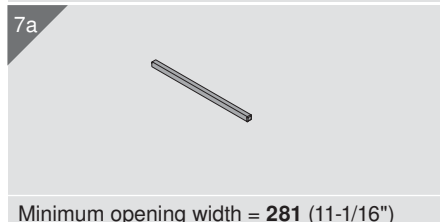
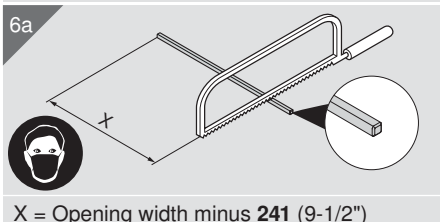
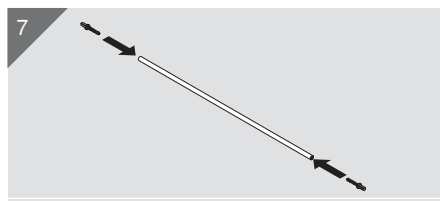
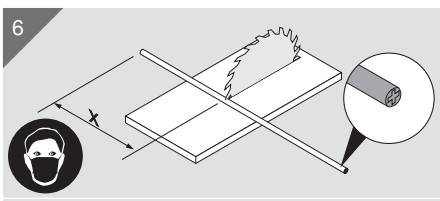
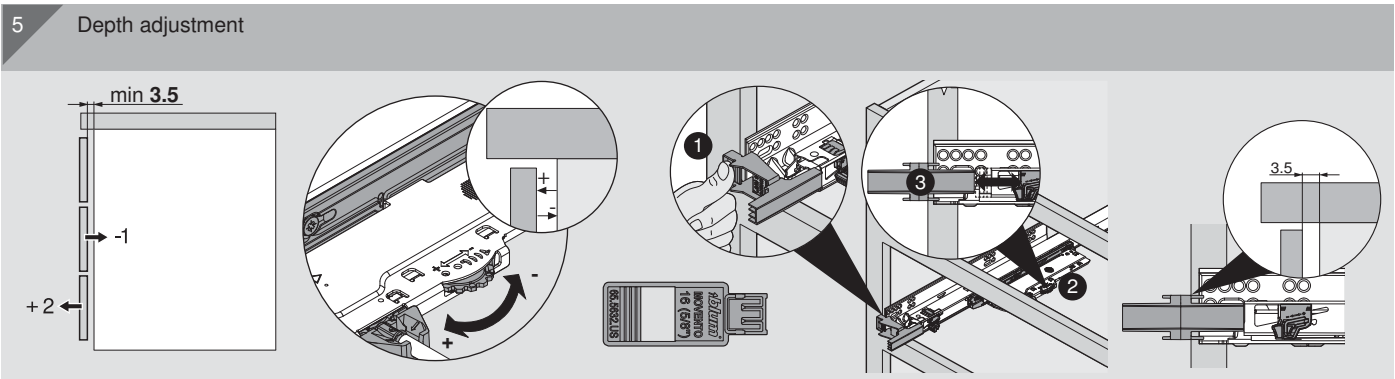
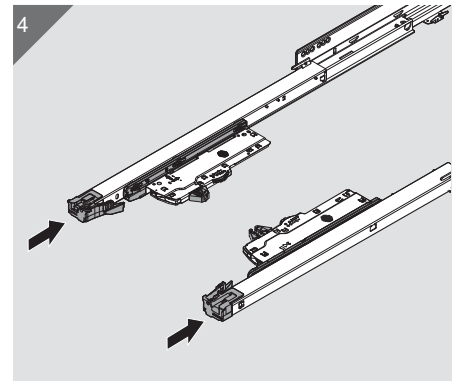
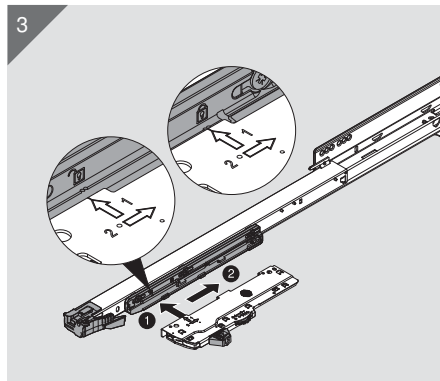
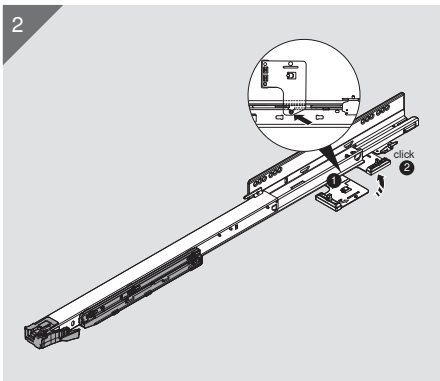
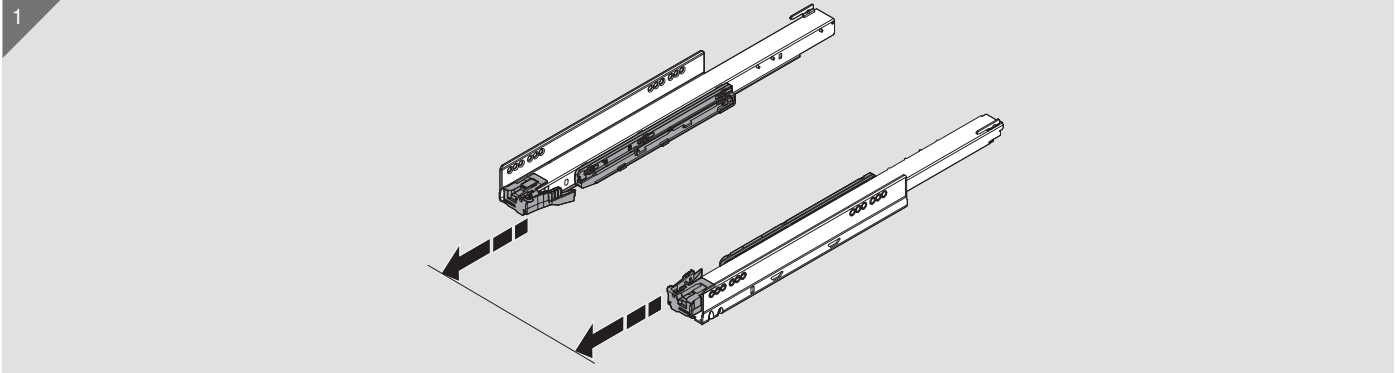


- Opening width:  
Minimum = **281** (11-1/16")  
Maximum = **305** (12")
- Length **64** (2-1/2"), cut to size

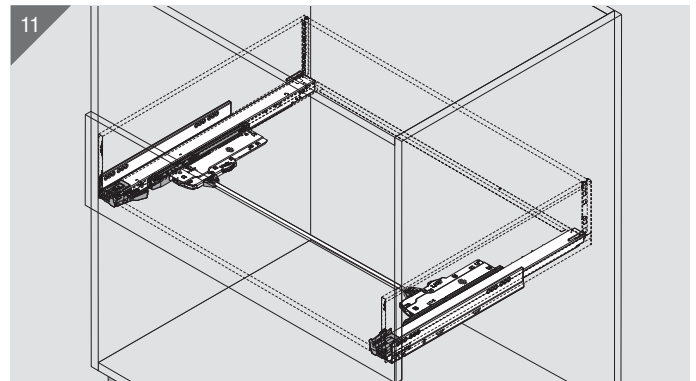
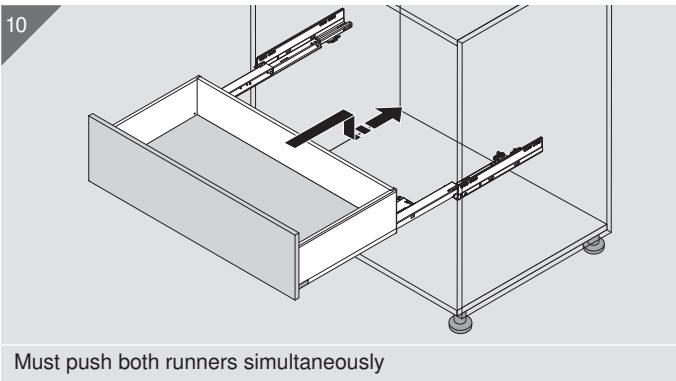
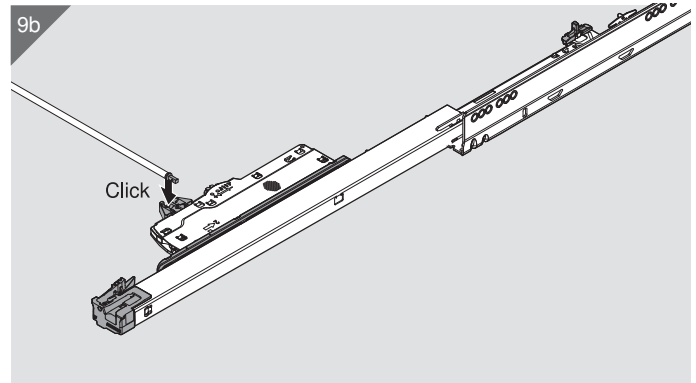
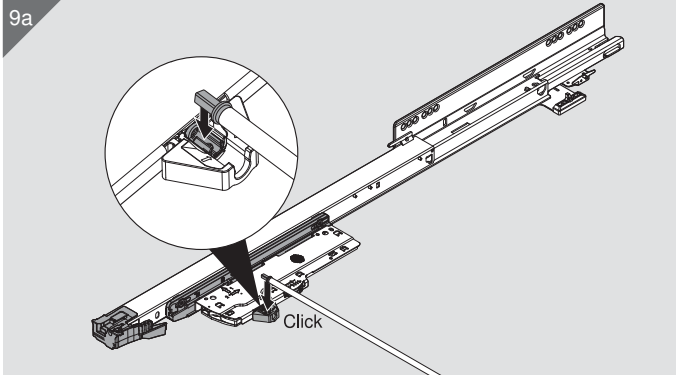
Part no.

	Sync. rod	<b>T60.300D.22</b>
--	-----------	--------------------

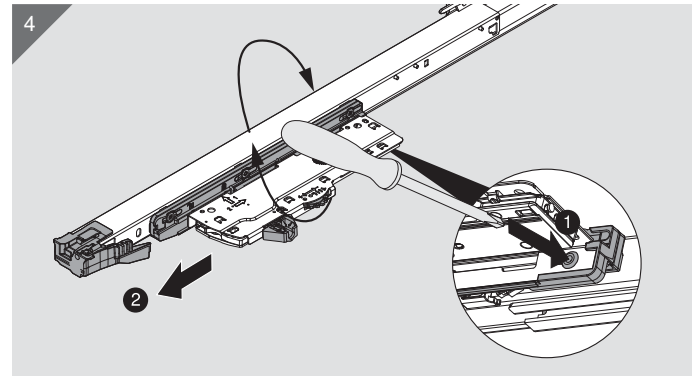
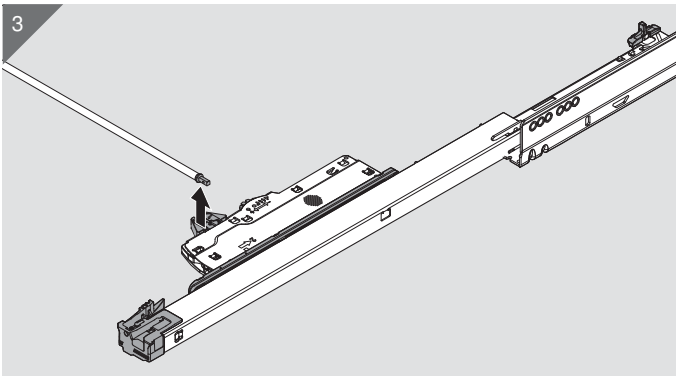
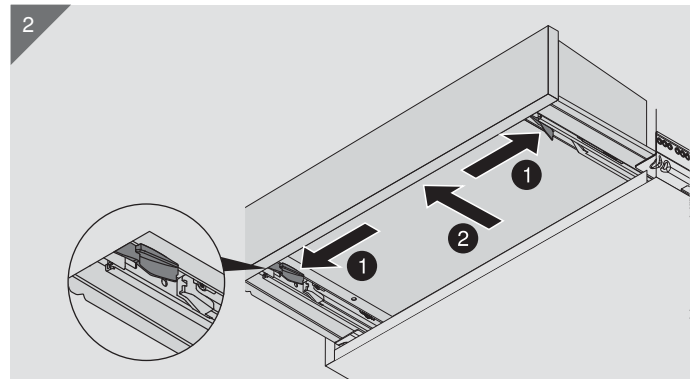
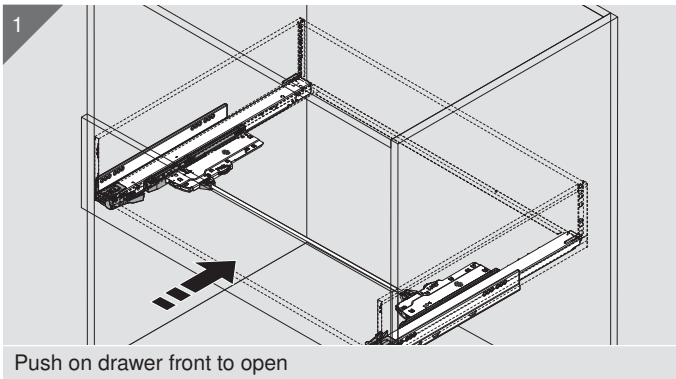
**NOTE:** A synchronization rod is recommended for all cabinet widths for optimal function







Removal





## Bottom Mount Drawer – Standard Duty

MOVENTO



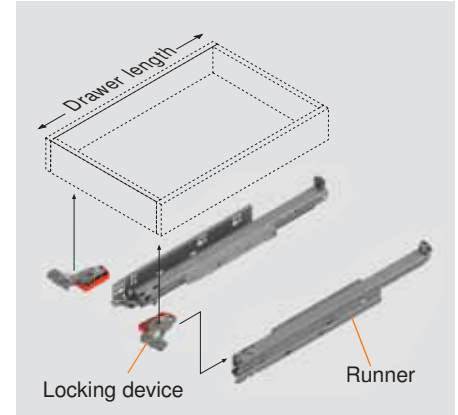
### Application



### Description

- Use 763. series runners
- Frameless or face frame cabinets
- Application is possible with any MOVENTO locking device
- 16 (5/8") drawer thickness
- 125 lb static load capacity**
- Heavy duty bottom mount application possible with 769R runners on page 26

### Basic Components



### Components

#### Runner set

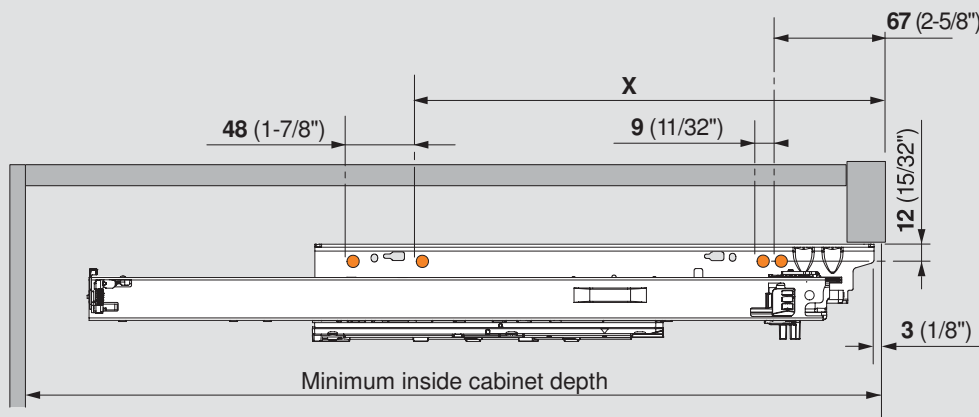
One set required per drawer



Drawer material thickness	For overall cabinet depth	Drawer length	MOVENTO
16 (5/8")	610 (24")	533 (21")	763.5330M
	533 (21")	457 (18")	763.4570M
	457 (18")	381 (15")	763.3810M
	381 (15")	305 (12")	763.3050M
Wood screw for installation			606N or 606P
System screw for installation			662.1150.HG

### Runner mounting specifications

#### Top view



MOVENTO	Drawer length	Minimum inside cabinet depth	X
763.5330M	533 (21")	553 (21-13/16")	316 (12-7/16")
763.4570M	457 (18")	477 (18-13/16")	316 (12-7/16")
763.3810M	381 (15")	401 (15-13/16")	284 (11-3/16")
763.3050M	305 (12")	325 (12-13/16")	188 (7-13/32")

# MOVENTO



## Lateral Stabilizer for 763./769.

### Application



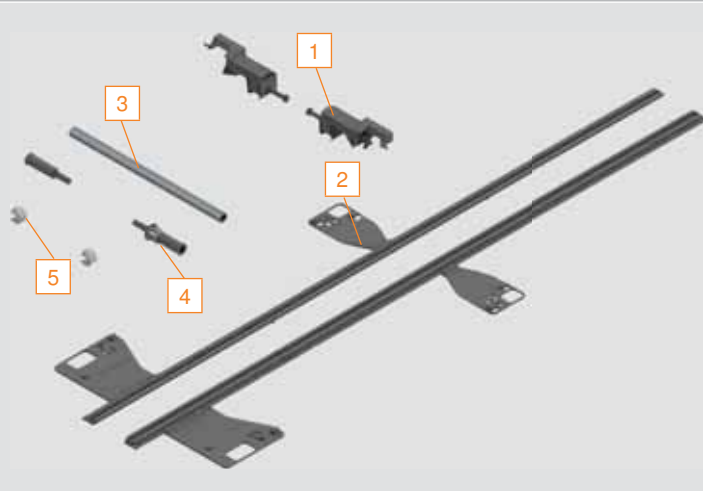
### Description

- Increases lateral stability
- Synchronizes left and right runners to prevent drawer racking
- Ideal for wide applications using MOVENTO
- Does not increase load capacity

### Specifications

- Frameless and blocked-out face frame applications **305** (12") to **610** (24") length drawers
- Recommended for opening widths **610** (24") and wider

### Lateral stabilizer set



#### Set includes:

- 1** Pinion housing (qty 2)
- 2** Gear rack with locating tabs (qty 2)
- 3** Linkage rod, length **1051** (41-3/8")
- 4** Pinion adapter (qty 2)
- 5** Locking clip (qty 2)

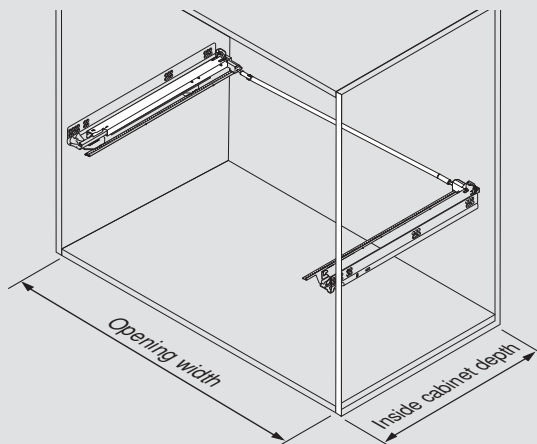
- Installation instructions

Part no.

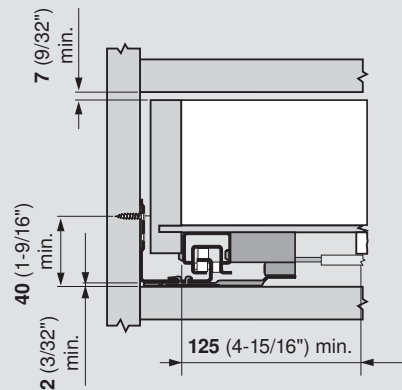
Lateral stabilizer set

**ZS7M686MU**

### Space requirements



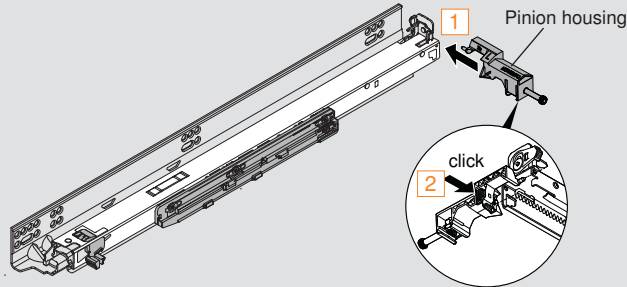
- Maximum opening width **1369** (53-29/32")
- Minimum inside cabinet depth = setback + runner length + **18** (23/32")



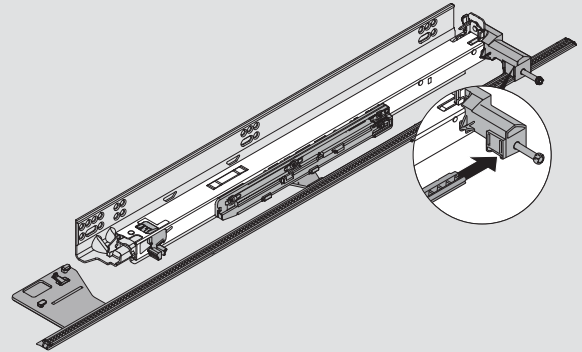
**NOTE:** MOVENTO runners will sit **2 (3/32")** higher when using the lateral stabilizer in bottom mount applications and may have to be raised for some bottom mount drawer applications using SERVO-DRIVE

**Step 1 – Attach left and right pinion housings**

- 1 Insert locating pins into MOVENTO runner
- 2 Press orange locking clips to lock into place

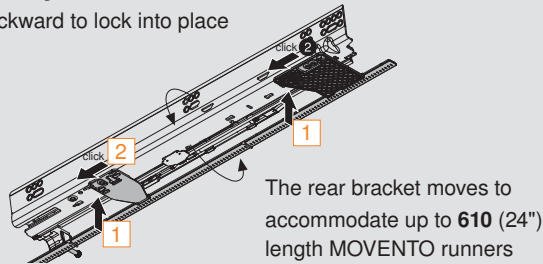


**Step 2 – Slide gear racks into pinion housings**

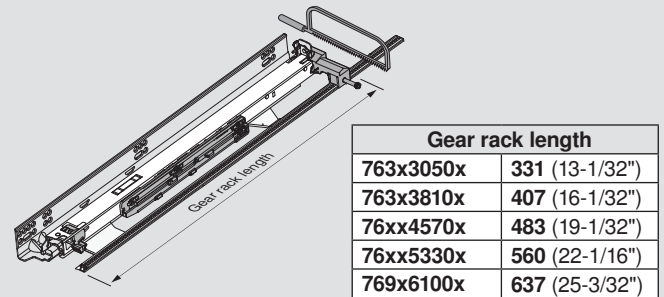


**Step 3 – Install gear racks**

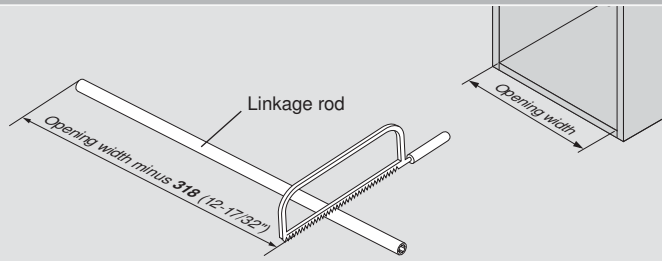
- 1 Insert locating tabs into cut-outs on bottom of runners
- 2 Slide backward to lock into place



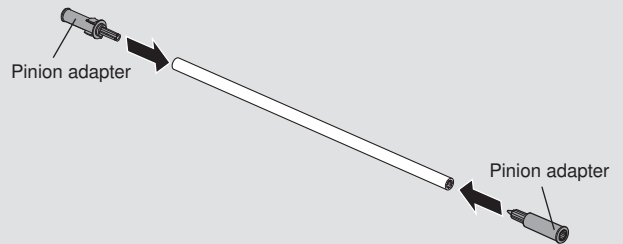
**Step 4 – Cut gear racks to length**



**Step 5 – Cut linkage rod to length**

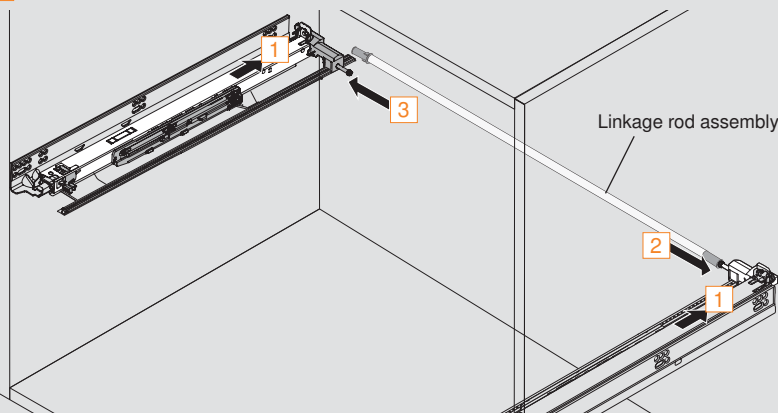


**Step 6 – Press pinion adapters into linkage rod**



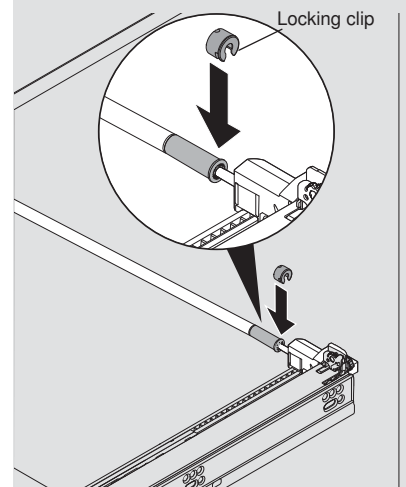
**Step 7 – Install linkage rod assembly**

- 1 Close drawer runners
- 2 Slide right pinion adapter onto right pinion
- 3 Slide linkage rod assembly left onto left pinion



**Step 8 – Install locking clips**

Install locking clips on both adapters



# MOVENTO



## Locking Devices

### Standard

One right and one left required per drawer



- Captive right device and self-aligning left device
- Self-adjusting drawer length tolerance
- Steel base with synthetic, spring-loaded release levers
- Minimum inside drawer width **170** (6-11/16")
- Side-to-side adjustment  $\pm 1.5$  (1/16")

Part no.

Right locking device	<b>T51.7601 R</b>
Left locking device	<b>T51.7601 L</b>
Installation screw	<b>606N or 606P</b>

### Vertical mount

One right and one left required per drawer



- Vertical mount locking device used to minimize sub-front splitting
- Captive right device and self-aligning left device
- Self-adjusting drawer length tolerance
- Steel base with synthetic, spring-loaded release levers
- Minimum inside drawer width **170** (6-11/16")
- Side-to-side adjustment  $\pm 1.5$  (1/16")
- Minimum sub-front thickness **16** (5/8")
- Designed for **13** (1/2") drawer bottom recess

Part no.

Right locking device	<b>T51.7601.20 R</b>
Left locking device	<b>T51.7601.20 L</b>
Installation screw	<b>606N or 606P</b>

### Narrow drawer

One right and one left required per drawer



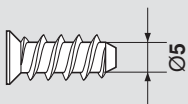
- For use with narrow drawers
- Maximum dynamic load capacity 25 lb
- Captive right device and self-aligning left device
- Self-adjusting drawer length tolerance
- Vertical mount, two-piece nylon
- Minimum inside drawer width **95** (3-3/4") without TIP-ON BLUMOTION
- Minimum sub-front thickness **16** (5/8")
- Designed for **13** (1/2") drawer bottom recess

Part no.

Right locking device	<b>T51.0501.20 R</b>
Left locking device	<b>T51.0501.20 L</b>
Installation screw	<b>606N or 606P</b>

### Deep thread system screw

- Pilot bore  $\varnothing 5$  (3/16") hole



Part no.

#6 x 11.5, #2 POZI	<b>662.1150.HG</b>
--------------------	--------------------

### Deep thread wood screw

- Pilot bore  $\varnothing 2.5$  (3/32") hole

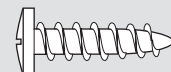


Part no.

#6 x 5/8", #2 Phillips	<b>606N</b>
#6 x 5/8", #2 POZI	<b>606P</b>
#6 x 1", #2 Phillips	<b>606W</b>

### Truss head wood screw

- Pilot bore  $\varnothing 2.5$  (3/32") hole



Part no.

#6 x 1/2", #2 Phillips	<b>612TH</b>
------------------------	--------------

Universal individual template



- Used to pre-bore holes for MOVENTO and TANDEM runners
- Also used for marking/pre-boring other Blum drawer systems, AVENTOS locating pins, hinge mounting plates, BLUMOTION adapters, and TIP-ON adapters
- Calibrated scale for accurate setting

Set includes:

- Universal individual template
- Ø2.5 and Ø5 stop collars
- Allen wrench

Part no.

Universal individual template

65.1051.02

Cabinet profile template set



- Used to pre-bore holes for MOVENTO and TANDEM runners
- Also used for marking/pre-boring other Blum drawer systems, AVENTOS locating pins and hinge mounting plates

Set includes:

- Rail, 1 meter long
- Replacement template (qty 4)
- Ø2.5 and Ø5 stop collars
- Allen wrench

Part no.

Cabinet profile template

65.1000.01

Replacement template

65.1001.01

Ø2.5 drill bit

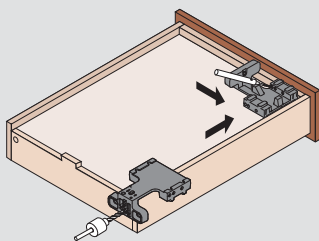
DB-2.5mm

Ø5 drill bit

DB-5mm

Concealed Runner Template

- Essential tool for drawers using any series MOVENTO or TANDEM runners
- To bore the Ø6 holes for rear hooks
- Pre-bore Ø2.5 hole for MOVENTO locking devices at the required angle



Part no.

Template **T65.1600.01**

Accessories (order separately)

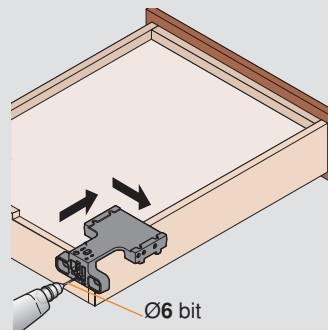
Ø2.5 drill bit **DB-2.5mm**

Ø6 drill bit **DB-6mm**

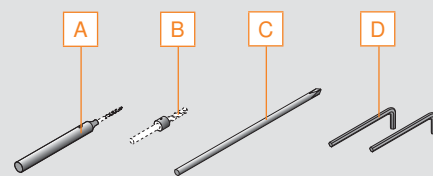
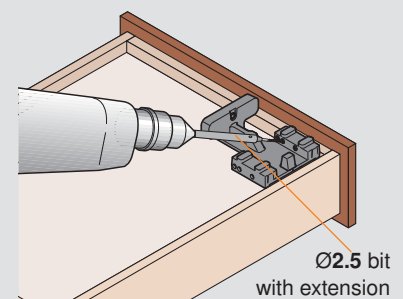
Tool set **T65.9000**

Using the Concealed Runner Template

1 Bore rear hook holes



2 Pre-bore holes for locking device screws



Tool set includes:

A Ø2.5 drill bit extension

B Ø6 stop collar

C #2 Phillips screwdriver tip

D Allen wrenches

NOTE: Items NOT sold separately

# MOVENTO



## Waste/Recycle Drawer with Motion Technologies

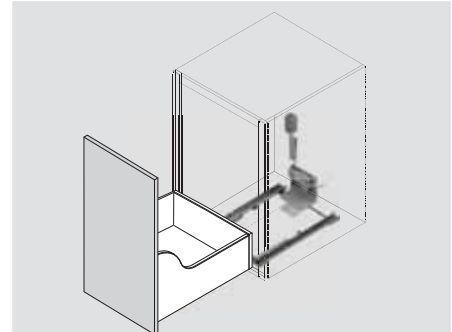
### Application



### Description

- Pre-assembled bottom mount set
- MOVENTO heavy duty full extension concealed runners with BLUMOTION
- For 12", 15" and 18" minimum opening widths
- For 16 (5/8") drawer side thickness
- 19 (3/4") over extension
- For face frame and frameless applications
- Tool-free side-to-side, height and tilt adjustment
- Maximum 6 (1/4") cabinet bottom recess
- **135 lb static load capacity**
- Designed to be used with SERVO-DRIVE or TIP-ON BLUMOTION

### Basic Components

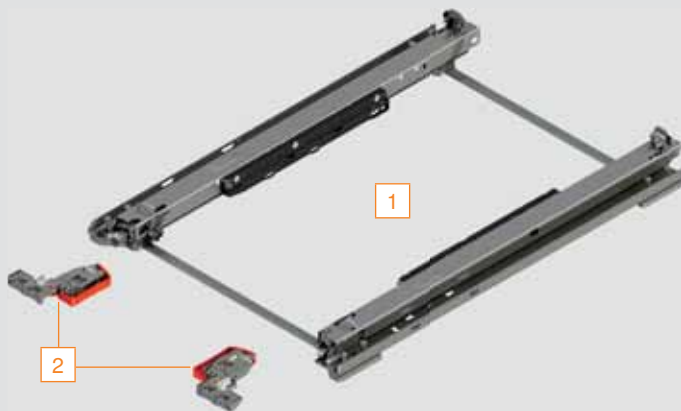


**NOTE:** Drawer and bins not included

### Components

#### MOVENTO waste/recycle set

One set required per drawer



#### Set includes:

- 1 MOVENTO heavy duty runner set with pre-mounted #6 x 1" wood screws for installation (qty 8)
- 2 Standard locking device (qty 2) with #6 x 5/8" wood screws for installation (qty 4)

- Installation template and instructions

MOVENTO waste/recycle set	Drawer length	Part no.
For 12" minimum opening width	<b>533 (21")</b>	<b>769R5337MB</b>
For 15" minimum opening width	<b>533 (21")</b>	<b>769R5337MD</b>
For 18" minimum opening width	<b>533 (21")</b>	<b>769R5337MF</b>

#### SERVO-DRIVE waste/recycle set

#### Set includes:

- Drive unit (pre-attached)
- Double bottom bracket with #6 x 1" wood screws (qty 2)
- Adapter plate
- 110 volt plug-in power supply with six feet of universal cable
- Screw-on distance bumpers (qty 4) with #6 x 5/8" wood screws for installation (qty 8)
- INSERTA cable connector
- Cable end protectors (qty 2)
- Cable clips (qty 4)
- Installation template, instructions and user manual

Part no.

SERVO-DRIVE waste/recycle set **Z10NA20UGUS**

**NOTE:** Power supply will operate up to two drive units in a double bottom bracket application (second drive unit sold separately)

#### TIP-ON BLUMOTION for MOVENTO waste/recycle set

#### Set includes:

- Heavy duty L5 TIP-ON BLUMOTION units and triggers
- TIP-ON BLUMOTION synchronization rod, pre-cut per width
- TIP-ON BLUMOTION synchronization adapters\*
- Instruction sheet

Part no.

For 769R5337MB set*	<b>T60L7570.B</b>
For 769R5337MD set	<b>T60L7570.D</b>
For 769R5337MF set	<b>T60L7570.F</b>

**NOTE\*:** T60L7570.B does not use TIP-ON BLUMOTION synchronization adapters



## Drawer and Cabinet Specifications

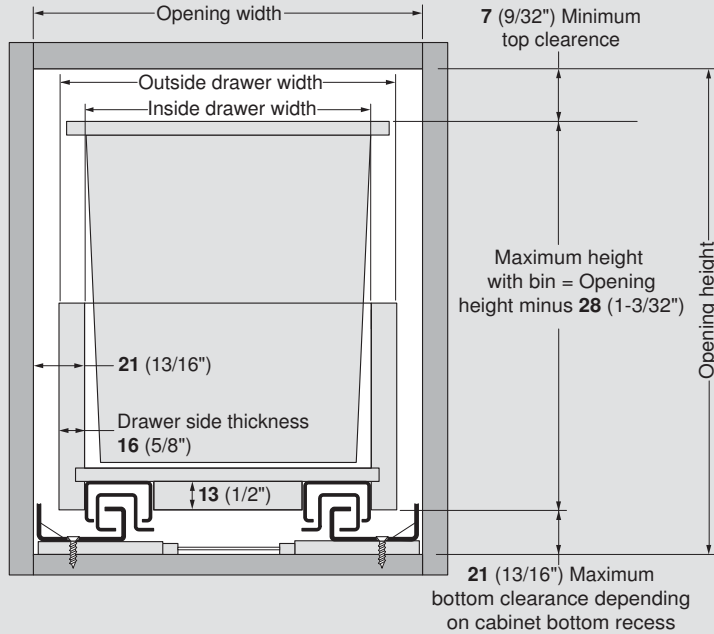
Drawer thickness	16 (5/8")
Lengths available	21"
Static load capacity	135 lb

## MOVENTO



### Drawer box specifications

#### Front view



**NOTE:** Drawer side material thickness may vary. Precise measurement of drawer side material thickness should be used when calculating outside drawer width using the table below. Inside drawer width **must** equal opening width minus 42 (1-21/32") for MOVENTO runners to align and function optimally.



### Important

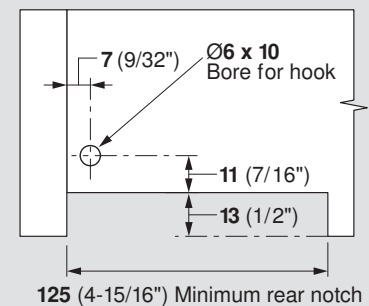
Bin width and height must be considered when designing your cabinet (see the diagram on the left).

#### Minimum inside cabinet depth

With SERVO-DRIVE	577 (22-23/32")
Without SERVO-DRIVE	564 (22-7/32")

#### Drawer back preparation

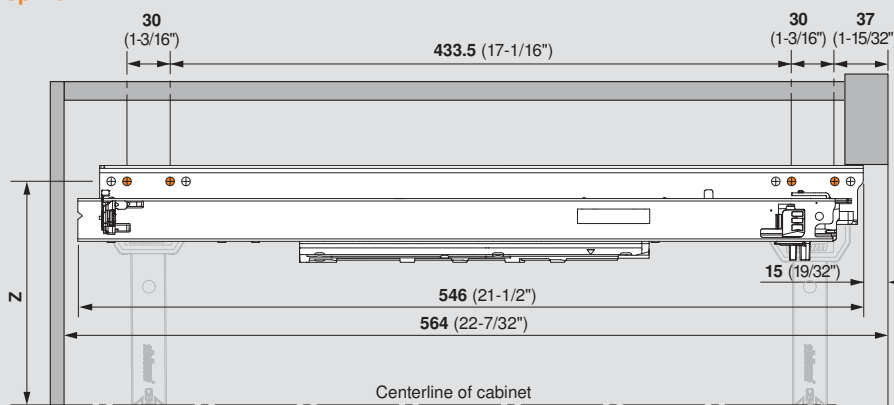
#### Rear view



Waste/recycle set	Minimum opening width	Inside drawer width	For drawer side thickness
			16 (5/8")
769R5337MB	305 (12")	263 (10-11/32")	295 (11-5/8")
769R5337MD	381 (15")	339 (13-11/32")	371 (14-19/32")
769R5337MF	457 (18")	415 (16-11/32")	447 (17-19/32")
<b>NOTE:</b> Drawer length is 533 (21") for all sets			Outside drawer width

### Set mounting specifications

#### Top view



Waste/recycle set	Z
769R5337MB	141.5 (5-9/16")
769R5337MD	179.5 (7-1/16")
769R5337MF	217.5 (8-9/16")

**NOTE:** Orange dots indicate pre-mounted screw locations. All four are required to meet specified load capacities.

# MOVENTO



## Bottom Mount Drawer – Heavy Duty

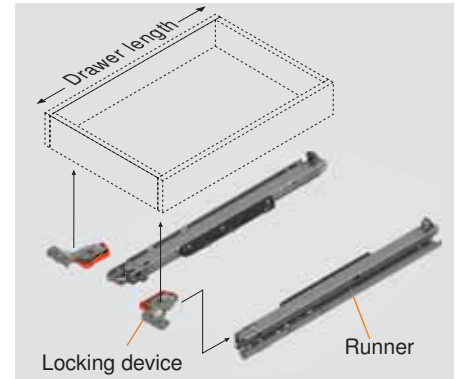
### Application



### Description

- MOVENTO heavy duty full extension concealed runners with BLUMOTION
- For **16 (5/8")** drawer side thickness
- **19 (3/4")** over extension
- For face frame and frameless applications
- Tool-free side-to-side, height and tilt adjustment
- Maximum **6 (1/4")** cabinet bottom recess
- **135 lb static load capacity**
- Designed to be used with SERVO-DRIVE or TIP-ON BLUMOTION

### Basic Components



### Components

#### MOVENTO bottom mount runner set

One set required per drawer



#### Set includes:

- 1 MOVENTO heavy duty runner set with pre-mounted #6 x 1" wood screws for installation (qty 8)
- 2 Standard locking device (qty 2) with #6 x 5/8" wood screws for installation (qty 4)

- Installation instructions

Interior roll-outs and roll-out shelf applications must be mounted to the bottom of the cabinet or to a fixed shelf/panel

Overall cabinet depth	Drawer length	MOVENTO set
<b>610 (24")</b>	<b>533 (21")</b>	<b>769R5330M</b>

**NOTE:** These runners are for **16 (5/8")** drawer side thickness

**NOTE:** Pre-attached 1/4" spacers should not be removed. Cabinet bottom recess must be **6 (1/4")** or less.

#### SERVO-DRIVE waste/recycle set

##### Set includes:

- Drive unit (pre-attached)
- Double bottom bracket with #6 x 1" wood screws (qty 2)
- Adapter plate
- 110 volt plug-in power supply with six feet of universal cable
- Screw-on distance bumpers (qty 4) with #6 x 5/8" wood screws for installation (qty 8)
- INSERTA cable connector
- Cable end protectors (qty 2)
- Cable clips (qty 4)
- Installation template, instructions and user manual

Part no.

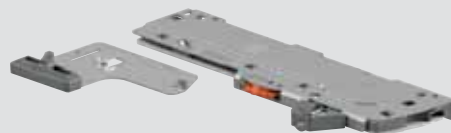
SERVO-DRIVE waste/recycle set

**Z10NA20UGUS**

**NOTE:** Power supply will operate up to two drive units in a double bottom bracket application (second drive unit sold separately)

#### TIP-ON BLUMOTION

- Enables MOVENTO drawers to be opened with just a light touch of the drawer front and retain BLUMOTION soft closing action
- Fully mechanical motion
- Can be used with or without pulls
- Minimum inside drawer width **281 (11-1/16")**



See page 12

## Drawer and Cabinet Specifications

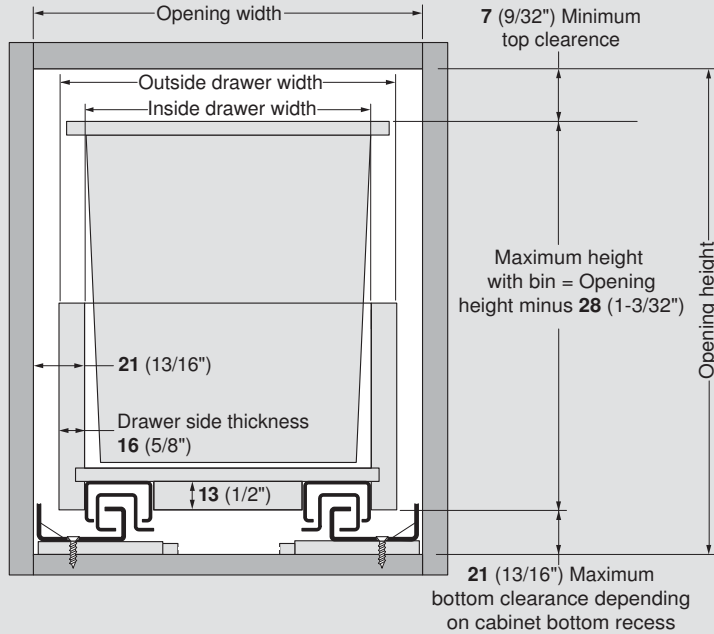
Drawer thickness	16 (5/8")
Lengths available	21"
Static load capacity	135 lb

## MOVENTO



### Drawer box specifications

#### Front view



**NOTE:** Drawer side material thickness may vary. Precise measurement of drawer side material thickness should be used when calculating outside drawer width using the table below. Inside drawer width **must** equal opening width minus 42 (1-21/32") for MOVENTO runners to align and function optimally.

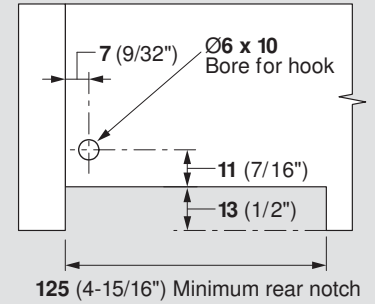
#### Calculating outside drawer width

For drawer side thickness	16 (5/8")
Deduct from opening width	10 (13/32")

**Example:** For 21" opening width and a 5/8" thick drawer, 21" minus 13/32" = 20-19/32" drawer width

### Drawer back preparation

#### Rear view



### Runner comparison

#### Side view

769R – No vertical profile

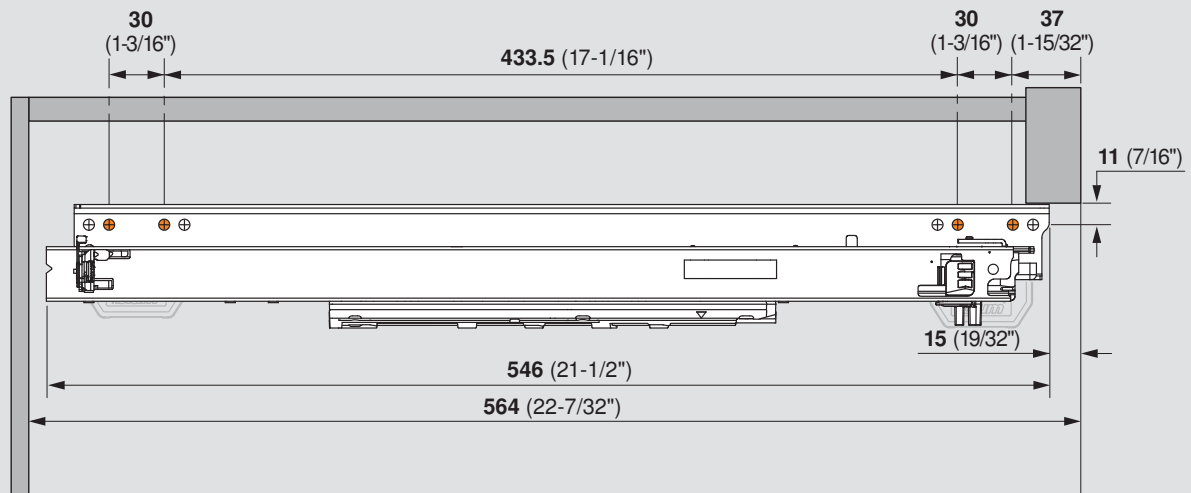


769. – Vertical profile



### Runner mounting specifications

#### Top view



**NOTE:** Orange dots indicate pre-mounted screw locations. All four are required to meet specified load capacities.



Part no.

606N	22
606P	22
606W	22
612TH	22
65.1000.01	23
65.1001.01	23
65.1051.02	23
65.5632.US	15
662.1150.HG	22
763.3050M	8, 14, 19
763.3810M	8, 14, 19
763.4570M	8, 14, 19
763.5330M	8, 14, 19
769.4570M	10, 14
769.5330M	10, 14
769.6100M	10, 14
769R5330M	26
769R5337MB	24
769R5337MD	24
769R5337MF	24
DB-2.5mm	23
DB-5mm	23
DB-6mm	23
T51.0501.20 L	22
T51.0501.20 R	22
T51.7601 L	22
T51.7601 R	22
T51.7601.20 L	22
T51.7601.20 R	22
T60.000D	15
T60.300D.22	15
T60L1118W	15
T60L7140	14
T60L7340	14
T60L7540	14
T60L7570	14
T60L7570.B	24
T60L7570.D	24
T60L7570.F	24
T65.1600.01	23
T65.9000	23
Z10NA20UGUS	24, 26
ZS7M686MU	20

## Conversion chart

mm	inch	
1	$\frac{1}{32}$	.031
1.5	$\frac{1}{16}$	.063
2	$\frac{3}{32}$	.094
3	$\frac{1}{8}$	.125
4	$\frac{5}{32}$	.156
5	$\frac{3}{16}$	.188
5.5	$\frac{7}{32}$	.219
6	$\frac{1}{4}$	.25
7	$\frac{9}{32}$	.281
8	$\frac{5}{16}$	.313
9	$\frac{11}{32}$	.344
9.5	$\frac{3}{8}$	.375
10	$\frac{13}{32}$	.406
11	$\frac{7}{16}$	.438
12	$\frac{15}{32}$	.469
13	$\frac{1}{2}$	.5
13.5	$\frac{17}{32}$	.531
14	$\frac{9}{16}$	.563
15	$\frac{19}{32}$	.594
16	$\frac{5}{8}$	.625
17	$\frac{21}{32}$	.656
17.5	$\frac{11}{16}$	.688
18	$\frac{23}{32}$	.719
19	$\frac{3}{4}$	.75
20	$\frac{25}{32}$	.781
20.5	$\frac{13}{16}$	.813
21	$\frac{27}{32}$	.844
22	$\frac{7}{8}$	.875
23	$\frac{29}{32}$	.906
24	$\frac{15}{16}$	.938
24.5	$\frac{31}{32}$	.969
25.4	1	1



**blum**<sup>®</sup>  
↑

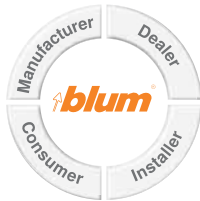
## Why Choose Blum



Blum, Inc. is a leading manufacturer of functional hardware for the kitchen cabinet and commercial casework industries specializing in lift systems, concealed hinges and drawer runner systems. Virtually all of the hardware needed to assemble and make cabinets functional is available within the wide range of quality Blum products. Blum supports the U.S. market with a network of more than 150 dependable distributors, 40+ knowledgeable Blum sales representatives and an experienced customer service department.

### Commitment To Manufacturing In The U.S.

Blum manufactures many of its products in our 450,000 sq ft manufacturing, logistics and warehouse facility located in Stanley, North Carolina. Manufacturing closer to the customer allows Blum to react quickly to changing customer needs including unexpected surges in demand. Customer pickups and deliveries can be timed to better match their production schedules. Blum is committed to manufacturing in the U.S. for the U.S. market.



Product development at Blum considers all of the various customers who will come in contact with our products. With this "Global Customer Benefits" philosophy we strive to create advantages for all users.



Blum, Inc. is ISO 9001 certified which means that you are assured of consistent quality in every Blum product. They exceed the requirements of ANSI/BHMA standards for cycle life, static load and self-closing performance.

Please visit [blum.com](http://blum.com) for information on other Blum products  
LIT.MOV.1000.01.17 Ident. 26357390 © 2017 Blum, Inc.

Blum, Inc.  
7733 Old Plank Rd.  
Stanley, NC 28164  
800-438-6788  
[blum.com](http://blum.com)

