

Assembly tools

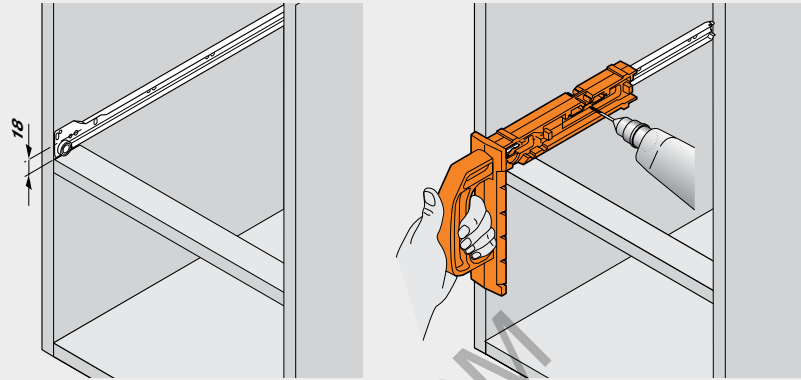
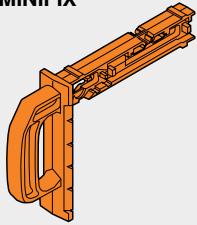
MINIFIX

For precise positioning of cabinet profile fixing screws.

For 230M and 230E runners

MINIFIX

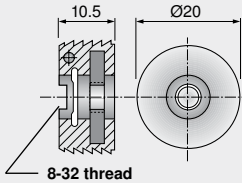
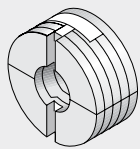
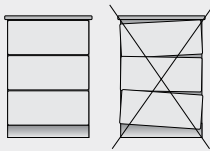
Part No.
65.3300



Drawer front adjusters and marking gauge

Drawer front adjuster

Nylon housing with pre-mounted 8-32 steel nut. For 4-sided drawers. Adjusts height and side-to-side by 5 (3/16").



Part No.
295.1000

Drawer front adjuster

295.1000

MINIPRESS Ram

MZM.0095

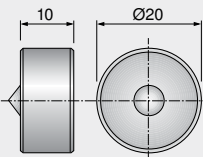
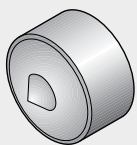
Ø20 rt handed drill bit

M01.ZB20.02 RH

Marking gauge

For marking center holes for knock-in drawer front adjusters, 295.1000.

For wooden 4-sided drawers.



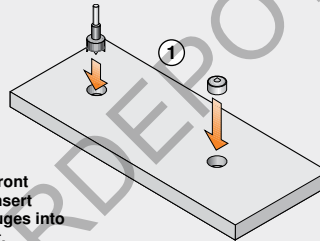
Part No.
65.2950

Marking gauge

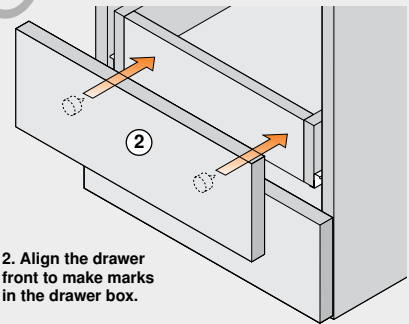
65.2950

Installation of drawer front adjuster using marking gauges

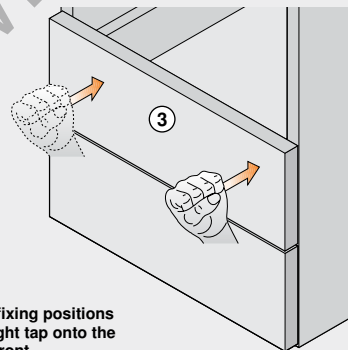
1. Bore for front adjusters. Insert marking gauges into drawer front.



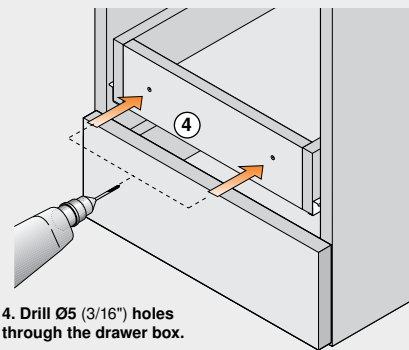
2. Align the drawer front to make marks in the drawer box.



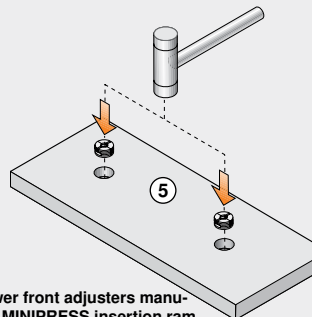
3. Mark fixing positions with a light tap onto the drawer front.



4. Drill Ø5 (3/16") holes through the drawer box.



5. Insert drawer front adjusters manually or with a MINIPRESS insertion ram (MZM.0095)



6. Install and adjust drawer front.

