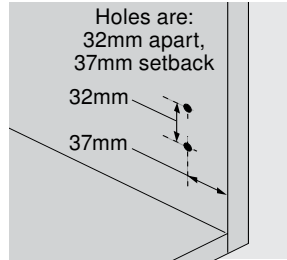


## ECOJIG



- Use to bore  $\text{\O}5\text{mm}$  holes for mounting plates that are mounted with system screws, EXPANDO dowels or INSERTA
- $\text{\O}5\text{mm}$  stop collar included

ECOJIG

Part no.

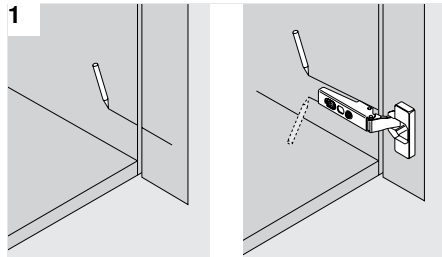
65.5070

**Accessories** (order separately)  
 $\text{\O}5\text{mm}$  drill bit

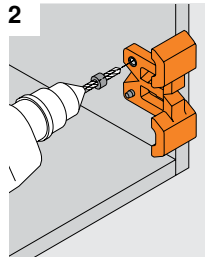
Part no.

DB-5mm

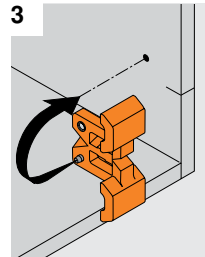
## Using the ECOJIG



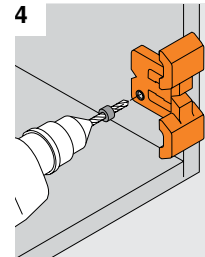
1 Mark hinge centerline, or hinge arm outline, on cabinet side panel.



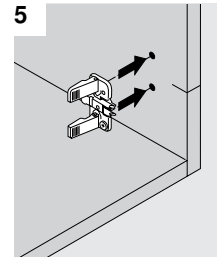
2 Align template with marks and bore top  $\text{\O}5\text{mm}$  hole.



3 Flip template over so locator pin seats into top hole.



4 Bore bottom  $\text{\O}5\text{mm}$  hole.



5 Install INSERTA, EXPANDO or system screw mounting plates.